

Datasheet for ABIN5534399  
**anti-PAK4 antibody (AA 187-216)**[Go to Product page](#)

## 3 Images

## Overview

Quantity:	400 µL
Target:	PAK4
Binding Specificity:	AA 187-216
Reactivity:	Human, Mouse
Host:	Rabbit
Clonality:	Polyclonal
Conjugate:	This PAK4 antibody is un-conjugated
Application:	Western Blotting (WB), Flow Cytometry (FACS)

## Product Details

Immunogen:	This Mouse Pak4 antibody is generated from rabbits immunized with a KLH conjugated synthetic peptide between 187-216 amino acids from the Central region of mouse Pak4.
Isotype:	Ig Fraction
Purification:	This antibody is purified through a protein A column, followed by peptide affinity purification.

## Target Details

Target:	PAK4
Alternative Name:	Pak4 ( <a href="#">PAK4 Products</a> )
Background:	Pak4 activates the JNK pathway. Plays a role in the reorganization of the actin cytoskeleton and in the formation of filopodia. Phosphorylates and inactivates the protein phosphatase SSH1, leading to increased inhibitory phosphorylation of the actin binding/depolymerizing factor

## Target Details

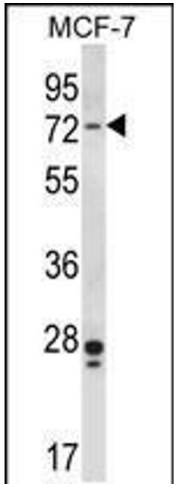
	cofilin. Decreased cofilin activity may lead to stabilization of actin filaments. Phosphorylates ARHGEF2 (By similarity).
Molecular Weight:	65 kDa
Gene ID:	70584
UniProt:	<a href="#">Q8BTW9</a>
Pathways:	<a href="#">RTK Signaling</a>

## Application Details

Application Notes:	For WB starting dilution is: 1:1000
	For FACS starting dilution is: 1:10~50
Restrictions:	For Research Use only

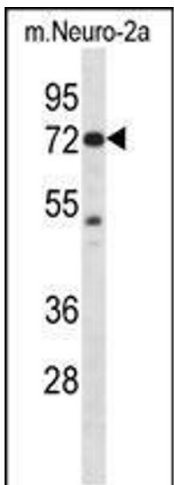
## Handling

Format:	Liquid
Concentration:	0.5 mg/mL
Buffer:	Supplied in PBS with 0.09 % (W/V) sodium azide.
Preservative:	Sodium azide
Precaution of Use:	This product contains Sodium azide: a POISONOUS AND HAZARDOUS SUBSTANCE which should be handled by trained staff only.
Storage:	4 °C,-20 °C
Storage Comment:	Store at 4°C for three months and -20°C, stable for up to one year. As with all antibodies care should be taken to avoid repeated freeze thaw cycles. Antibodies should not be exposed to prolonged high temperatures.



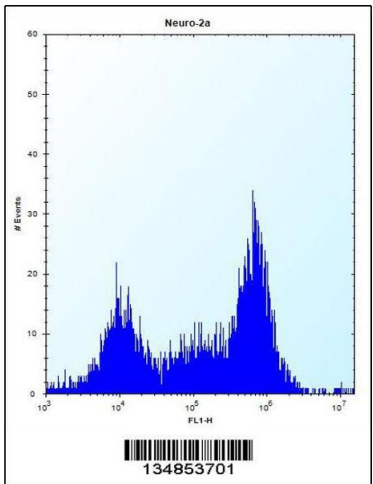
#### Western Blotting

**Image 1.** Western blot analysis in MCF-7 cell line lysates (35ug/lane).



#### Western Blotting

**Image 2.** Western blot analysis in Neuro-2a cell line lysates (35ug/lane).



#### Flow Cytometry

**Image 3.** Flow cytometric analysis of Neuro-2a cells (right histogram) compared to a negative control cell (left histogram). FITC-conjugated donkey-anti-rabbit secondary antibodies were used for the analysis.