

Datasheet for ABIN5534405
anti-IDE antibody (AA 406-435)[Go to Product page](#)

3 Images

Overview

Quantity:	400 µL
Target:	IDE
Binding Specificity:	AA 406-435
Reactivity:	Human, Mouse
Host:	Rabbit
Clonality:	Polyclonal
Conjugate:	This IDE antibody is un-conjugated
Application:	Western Blotting (WB), Immunohistochemistry (Paraffin-embedded Sections) (IHC (p))

Product Details

Immunogen:	This IDE antibody is generated from rabbits immunized with a KLH conjugated synthetic peptide between 406-435 amino acids from the Central region of human IDE.
Isotype:	Ig Fraction
Purification:	This antibody is prepared by Saturated Ammonium Sulfate (SAS) precipitation followed by dialysis

Target Details

Target:	IDE
Alternative Name:	IDE (IDE Products)
Background:	IDE belongs to a protease family responsible for intercellular peptide signalling. Though its role in the cellular processing of insulin has not yet been defined, insulin-degrading enzyme is

Target Details

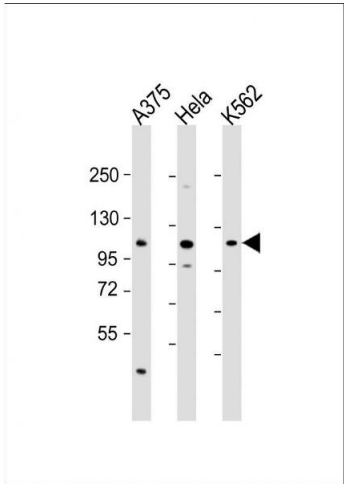
	thought to be involved in the termination of the insulin response.
Molecular Weight:	118 kDa
Gene ID:	3416
UniProt:	P14735
Pathways:	SARS-CoV-2 Protein Interactome

Application Details

Application Notes:	For WB starting dilution is: 1:2000
	For IHC-P starting dilution is: 1:10~50
Restrictions:	For Research Use only

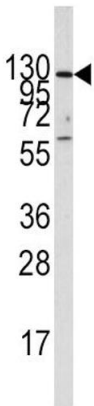
Handling

Format:	Liquid
Buffer:	Supplied in PBS with 0.09 % (W/V) sodium azide.
Preservative:	Sodium azide
Precaution of Use:	This product contains Sodium azide: a POISONOUS AND HAZARDOUS SUBSTANCE which should be handled by trained staff only.
Storage:	4 °C, -20 °C
Storage Comment:	Store at 4°C for three months and -20°C, stable for up to one year. As with all antibodies care should be taken to avoid repeated freeze thaw cycles. Antibodies should not be exposed to prolonged high temperatures.



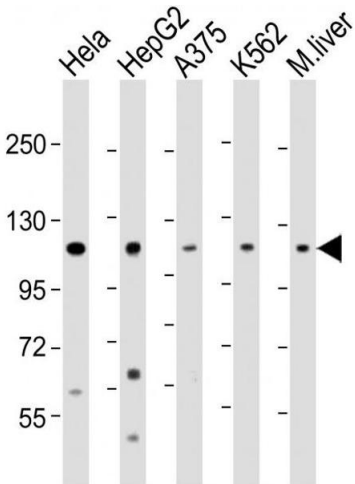
Western Blotting

Image 1. Western Blot at 1:2000 dilution Lane 1: A375 whole cell lysate Lane 2: HeLa whole cell lysate Lane 3: K562 whole cell lysate Lysates/proteins at 20 ug per lane.



Western Blotting

Image 2. Western blot analysis of anti-IDE Antibody in A375 cell line lysates (35ug/lane)



Western Blotting

Image 3. Western Blot at 1:2000 dilution Lane 1: HeLa whole cell lysate Lane 2: HepG2 whole cell lysate Lane 3: A375 whole cell lysate Lane 4: K562 whole cell lysate Lane 5: mouse liver lysate Lysates/proteins at 20 ug per lane.