

Datasheet for ABIN5534424
anti-INSRR antibody (C-Term)[Go to Product page](#)

2 Images

Overview

Quantity:	400 µL
Target:	INSRR
Binding Specificity:	AA 1228-1255, C-Term
Reactivity:	Human, Mouse
Host:	Rabbit
Clonality:	Polyclonal
Conjugate:	This INSRR antibody is un-conjugated
Application:	Western Blotting (WB)

Product Details

Immunogen:	This Mouse Insrr antibody is generated from rabbits immunized with a KLH conjugated synthetic peptide between 1228-1255 amino acids from the C-terminal region of mouse Insrr.
Isotype:	Ig Fraction
Purification:	This antibody is purified through a protein A column, followed by peptide affinity purification.

Target Details

Target:	INSRR
Alternative Name:	Insrr (INSRR Products)
Background:	This receptor probably binds an insulin related protein and has a tyrosine-protein kinase activity. It phosphorylates the insulin receptor substrates IRS-1 and IRS-2.

Target Details

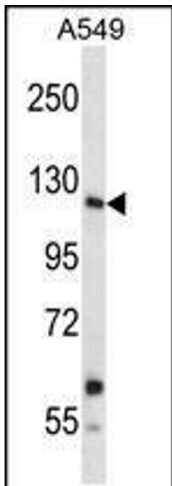
Molecular Weight:	145 kDa
Gene ID:	23920
UniProt:	Q9WTL4
Pathways:	RTK Signaling

Application Details

Application Notes:	For WB starting dilution is: 1:1000
Restrictions:	For Research Use only

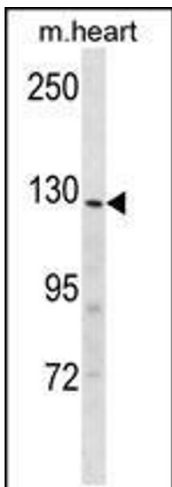
Handling

Format:	Liquid
Concentration:	0.5 mg/mL
Buffer:	Supplied in PBS with 0.09 % (W/V) sodium azide.
Preservative:	Sodium azide
Precaution of Use:	This product contains Sodium azide: a POISONOUS AND HAZARDOUS SUBSTANCE which should be handled by trained staff only.
Storage:	4 °C,-20 °C
Storage Comment:	Store at 4°C for three months and -20°C, stable for up to one year. As with all antibodies care should be taken to avoid repeated freeze thaw cycles. Antibodies should not be exposed to prolonged high temperatures.



Western Blotting

Image 1. Western blot analysis in A549 cell line lysates (35ug/lane).



Western Blotting

Image 2. Western blot analysis in mouse heart tissue lysates (35ug/lane).