



[Go to Product page](#)

Datasheet for ABIN5534433
anti-NCS1 antibody (AA 118-144)

3 Images

Overview

Quantity:	400 µL
Target:	NCS1
Binding Specificity:	AA 118-144
Reactivity:	Human
Host:	Rabbit
Clonality:	Polyclonal
Conjugate:	This NCS1 antibody is un-conjugated
Application:	Western Blotting (WB), Flow Cytometry (FACS), Immunohistochemistry (Paraffin-embedded Sections) (IHC (p))

Product Details

Immunogen:	This NCS1 antibody is generated from rabbits immunized with a KLH conjugated synthetic peptide between 118-144 amino acids from the Central region of human NCS1.
Isotype:	Ig Fraction
Purification:	This antibody is prepared by Saturated Ammonium Sulfate (SAS) precipitation followed by dialysis

Target Details

Target:	NCS1
Alternative Name:	NCS1 (NCS1 Products)
Background:	NCS1 is a member of the neuronal calcium sensor gene family, which encode calcium-binding

Target Details

proteins expressed predominantly in neurons. NCS1 regulates G protein-coupled receptor phosphorylation in a calcium-dependent manner and can substitute for calmodulin. This protein is thought to be associated with secretory granules and may be involved in the regulation of neurosecretion.

Molecular Weight: 22 kDa

Gene ID: 23413

UniProt: [P62166](#)

Application Details

Application Notes: For WB starting dilution is: 1:1000

For IHC-P starting dilution is: 1:50~100

For FACS starting dilution is: 1:10~50

Restrictions: For Research Use only

Handling

Format: Liquid

Concentration: 1.29 mg/mL

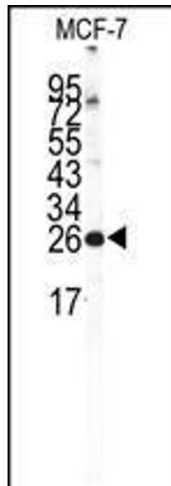
Buffer: Supplied in PBS with 0.09 % (W/V) sodium azide.

Preservative: Sodium azide

Precaution of Use: This product contains Sodium azide: a POISONOUS AND HAZARDOUS SUBSTANCE which should be handled by trained staff only.

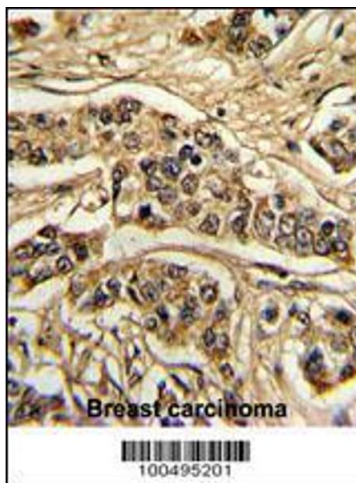
Storage: 4 °C,-20 °C

Storage Comment: Store at 4°C for three months and -20°C, stable for up to one year. As with all antibodies care should be taken to avoid repeated freeze thaw cycles. Antibodies should not be exposed to prolonged high temperatures.



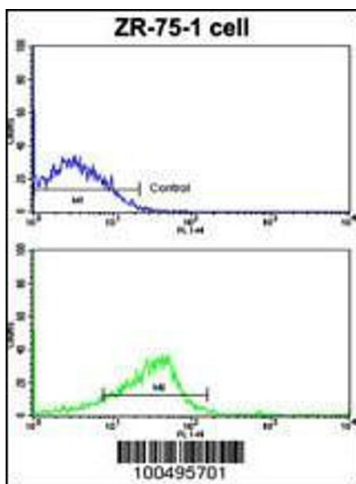
Western Blotting

Image 1. Western blot analysis of NCS1 Antibody in MCF-7 cell line lysates (35ug/lane)



Immunohistochemistry

Image 2. Formalin-fixed and paraffin-embedded human breast carcinoma reacted with NCS1 Antibody, which was peroxidase-conjugated to the secondary antibody, followed by DAB staining.



Flow Cytometry

Image 3. Flow cytometric analysis of ZR-75-1 cells using NCS1 Antibody (bottom histogram) compared to a negative control cell (top histogram). FITC-conjugated goat-anti-rabbit secondary antibodies were used for the analysis.