



[Go to Product page](#)

Datasheet for ABIN5534450
anti-LALBA antibody (AA 39-68)

3 Images

Overview

Quantity:	400 µL
Target:	LALBA
Binding Specificity:	AA 39-68
Reactivity:	Human
Host:	Rabbit
Clonality:	Polyclonal
Conjugate:	This LALBA antibody is un-conjugated
Application:	Western Blotting (WB), Immunohistochemistry (Paraffin-embedded Sections) (IHC (p))

Product Details

Immunogen:	This LALBA antibody is generated from rabbits immunized with a KLH conjugated synthetic peptide between 39-68 amino acids from the Central region of human LALBA.
Isotype:	Ig Fraction
Purification:	This antibody is purified through a protein A column, followed by peptide affinity purification.

Target Details

Target:	LALBA
Alternative Name:	LALBA (LALBA Products)
Background:	This gene encodes alpha-lactalbumin, a principal protein of milk. Alpha-lactalbumin forms the regulatory subunit of the lactose synthase (LS) heterodimer and beta 1,4-galactosyltransferase (beta4Gal-T1) forms the catalytic component. Together, these proteins enable LS to produce

Target Details

lactose by transferring galactose moieties to glucose. As a monomer, alpha-lactalbumin strongly binds calcium and zinc ions and may possess bactericidal or antitumor activity. A folding variant of alpha-lactalbumin, called HAMLET, likely induces apoptosis in tumor and immature cells.

Molecular Weight: 16 kDa

Gene ID: 3906

UniProt: [P00709](#)

Application Details

Application Notes: For IHC-P starting dilution is: 1:25

For WB starting dilution is: 1:1000

Restrictions: For Research Use only

Handling

Format: Liquid

Concentration: 0.5 mg/mL

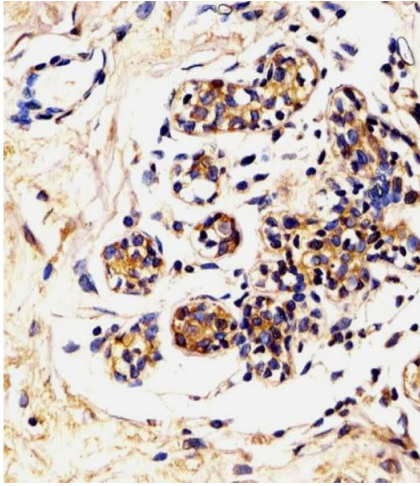
Buffer: Supplied in PBS with 0.09 % (W/V) sodium azide.

Preservative: Sodium azide

Precaution of Use: This product contains Sodium azide: a POISONOUS AND HAZARDOUS SUBSTANCE which should be handled by trained staff only.

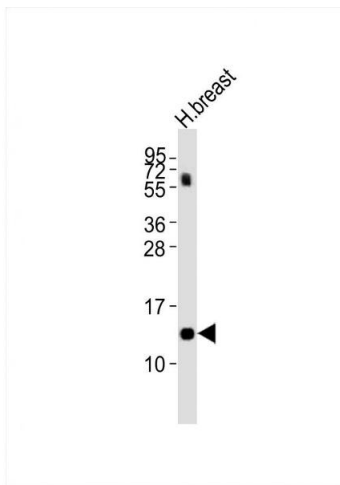
Storage: 4 °C, -20 °C

Storage Comment: Store at 4°C for three months and -20°C, stable for up to one year. As with all antibodies care should be taken to avoid repeated freeze thaw cycles. Antibodies should not be exposed to prolonged high temperatures.



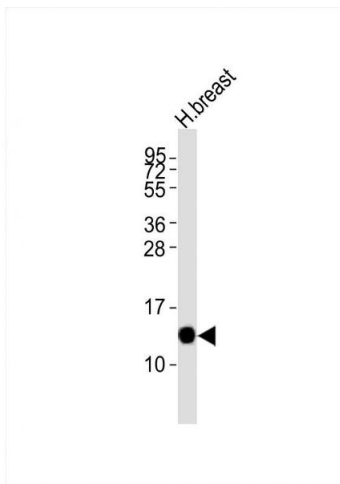
Immunohistochemistry

Image 1. Antibody staining LALBA in Human breast tissue sections by Immunohistochemistry (IHC-P - paraformaldehyde-fixed, paraffin-embedded sections).



Western Blotting

Image 2. Western Blot at 1:2000 dilution + human breast lysates Lysates/proteins at 20 ug per lane.



Western Blotting

Image 3. Western Blot at 1:2000 dilution + human breast lysates Lysates/proteins at 20 ug per lane.