

Datasheet for ABIN5534457  
**anti-LRMP antibody (C-Term)**[Go to Product page](#)

## 1 Image

## Overview

Quantity:	400 µL
Target:	LRMP
Binding Specificity:	AA 403-431, C-Term
Reactivity:	Mouse
Host:	Rabbit
Clonality:	Polyclonal
Conjugate:	This LRMP antibody is un-conjugated
Application:	Western Blotting (WB)

## Product Details

Immunogen:	This Mouse Lrmp antibody is generated from rabbits immunized with a KLH conjugated synthetic peptide between 403-431 amino acids from the C-terminal region of mouse Lrmp.
Isotype:	Ig Fraction
Purification:	This antibody is purified through a protein A column, followed by peptide affinity purification.

## Target Details

Target:	LRMP
Alternative Name:	Lrmp ( <a href="#">LRMP Products</a> )
Background:	The function of this protein is unknown.
Molecular Weight:	60 kDa

## Target Details

Gene ID: 16970

UniProt: [Q60664](#)

## Application Details

Application Notes: For WB starting dilution is: 1:1000

Restrictions: For Research Use only

## Handling

Format: Liquid

Concentration: 0.5 mg/mL

Buffer: Supplied in PBS with 0.09 % (W/V) sodium azide.

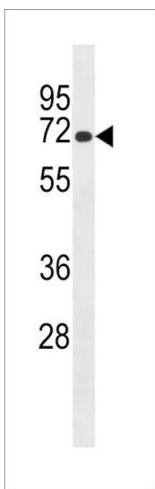
Preservative: Sodium azide

Precaution of Use: This product contains Sodium azide: a POISONOUS AND HAZARDOUS SUBSTANCE which should be handled by trained staff only.

Storage: 4 °C, -20 °C

Storage Comment: Store at 4°C for three months and -20°C, stable for up to one year. As with all antibodies care should be taken to avoid repeated freeze thaw cycles. Antibodies should not be exposed to prolonged high temperatures.

## Images



### Western Blotting

**Image 1.** Western blot analysis of lysate from mouse spleen tissue lysate, using Mouse Lrmp Antibody at 1:1000 at each lane.