

Datasheet for ABIN5534477  
**anti-MAGOH antibody (AA 46-74)**[Go to Product page](#)

## 2 Images

## Overview

Quantity:	400 µL
Target:	MAGOH
Binding Specificity:	AA 46-74
Reactivity:	Human
Host:	Rabbit
Clonality:	Polyclonal
Conjugate:	This MAGOH antibody is un-conjugated
Application:	Western Blotting (WB), Immunohistochemistry (Paraffin-embedded Sections) (IHC (p))

## Product Details

Immunogen:	This MAGOH antibody is generated from rabbits immunized with a KLH conjugated synthetic peptide between 46-74 amino acids from the Central region of human MAGOH.
Isotype:	Ig Fraction
Purification:	This antibody is purified through a protein A column, followed by peptide affinity purification.

## Target Details

Target:	MAGOH
Alternative Name:	MAGOH ( <a href="#">MAGOH Products</a> )
Background:	Drosophila that have mutations in their mago nashi (grandchildless) gene produce progeny with defects in germplasm assembly and germline development. This gene encodes the mammalian mago nashi homolog. In mammals, mRNA expression is not limited to the germ

## Target Details

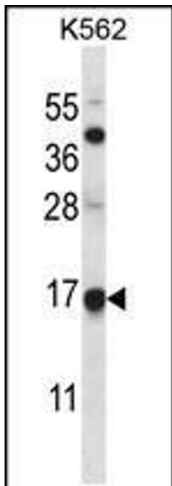
	plasm, but is expressed ubiquitously in adult tissues and can be induced by serum stimulation of quiescent fibroblasts.
Molecular Weight:	17 kDa
Gene ID:	4116
UniProt:	<a href="#">P61326</a>

## Application Details

Application Notes:	For WB starting dilution is: 1:1000  For IHC-P starting dilution is: 1:10~50
Restrictions:	For Research Use only

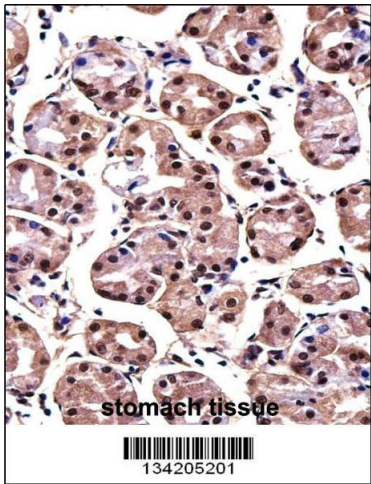
## Handling

Format:	Liquid
Concentration:	0.5 mg/mL
Buffer:	Supplied in PBS with 0.09 % (W/V) sodium azide.
Preservative:	Sodium azide
Precaution of Use:	This product contains Sodium azide: a POISONOUS AND HAZARDOUS SUBSTANCE which should be handled by trained staff only.
Storage:	4 °C,-20 °C
Storage Comment:	Store at 4°C for three months and -20°C, stable for up to one year. As with all antibodies care should be taken to avoid repeated freeze thaw cycles. Antibodies should not be exposed to prolonged high temperatures.



### Western Blotting

**Image 1.** Western blot analysis in K562 cell line lysates (35ug/lane).



### Immunohistochemistry

**Image 2.** MAGOH Antibody immunohistochemistry analysis in formalin fixed and paraffin embedded human stomach tissue followed by peroxidase conjugation of the secondary antibody and DAB staining.