

Datasheet for ABIN5534484

anti-MAP3K3 antibody (AA 228-257)[Go to Product page](#)**1** Image

Overview

Quantity:	400 µL
Target:	MAP3K3
Binding Specificity:	AA 228-257
Reactivity:	Mouse
Host:	Rabbit
Clonality:	Polyclonal
Conjugate:	This MAP3K3 antibody is un-conjugated
Application:	Western Blotting (WB)

Product Details

Immunogen:	This Mouse Map3k3 antibody is generated from rabbits immunized with a KLH conjugated synthetic peptide between 228-257 amino acids from the Central region of mouse Map3k3.
Isotype:	Ig Fraction
Purification:	This antibody is purified through a protein A column, followed by peptide affinity purification.

Target Details

Target:	MAP3K3
Alternative Name:	Map3k3 (MAP3K3 Products)
Background:	Component of a protein kinase signal transduction cascade. Map3k3 mediates activation of the NF-kappa-B, AP1 and DDIT3 transcriptional regulators.

Target Details

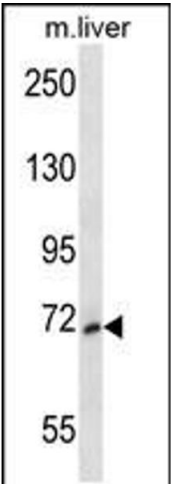
Molecular Weight:	71 kDa
Gene ID:	26406
UniProt:	Q61084
Pathways:	MAPK Signaling

Application Details

Application Notes:	For WB starting dilution is: 1:1000
Restrictions:	For Research Use only

Handling

Format:	Liquid
Concentration:	0.47 mg/mL
Buffer:	Supplied in PBS with 0.09 % (W/V) sodium azide.
Preservative:	Sodium azide
Precaution of Use:	This product contains Sodium azide: a POISONOUS AND HAZARDOUS SUBSTANCE which should be handled by trained staff only.
Storage:	4 °C,-20 °C
Storage Comment:	Store at 4°C for three months and -20°C, stable for up to one year. As with all antibodies care should be taken to avoid repeated freeze thaw cycles. Antibodies should not be exposed to prolonged high temperatures.



Western Blotting

Image 1. Western blot analysis in mouse liver tissue lysates (35ug/lane).