

Datasheet for ABIN5534502  
**anti-MARK3 antibody (C-Term)**



[Go to Product page](#)

2 Images

## Overview

|                      |                                      |
|----------------------|--------------------------------------|
| Quantity:            | 400 µL                               |
| Target:              | MARK3                                |
| Binding Specificity: | AA 608-636, C-Term                   |
| Reactivity:          | Human, Mouse                         |
| Host:                | Rabbit                               |
| Clonality:           | Polyclonal                           |
| Conjugate:           | This MARK3 antibody is un-conjugated |
| Application:         | Western Blotting (WB)                |

## Product Details

|               |  |
|---------------|--|
| Immunogen:    | This Mouse Mark3 antibody is generated from rabbits immunized with a KLH conjugated synthetic peptide between 608-636 amino acids from the C-terminal region of mouse Mark3. |
| Isotype:      | Ig Fraction  |
| Purification: | This antibody is purified through a protein A column, followed by peptide affinity purification.   |

## Target Details

|                   |  |
|-------------------|--|
| Target:           | MARK3  |
| Alternative Name: | Mark3 ( <a href="#">MARK3 Products</a> )   |
| Background:       | Involved in the specific phosphorylation of microtubule-associated proteins for tau, MAP2 and MAP4. Phosphorylates CDC25C (By similarity). |

### Target Details

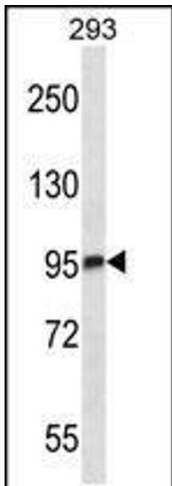
|                   |  |
|-------------------|--|
| Molecular Weight: | 84 kDa   |
| Gene ID:          | 17169  |
| UniProt:          | <a href="#">Q03141</a>                         |
| Pathways:         | <a href="#">SARS-CoV-2 Protein Interactome</a> |

### Application Details

|                    |                                     |
|--------------------|-------------------------------------|
| Application Notes: | For WB starting dilution is: 1:1000 |
| Restrictions:      | For Research Use only               |

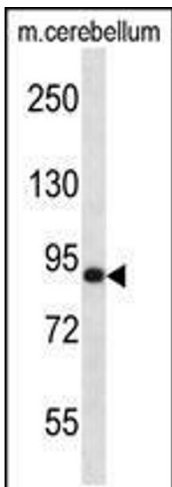
### Handling

|                    |  |
|--------------------|--|
| Format:            | Liquid   |
| Concentration:     | 0.5 mg/mL  |
| Buffer:            | Supplied in PBS with 0.09 % (W/V) sodium azide.  |
| Preservative:      | Sodium azide   |
| Precaution of Use: | This product contains Sodium azide: a POISONOUS AND HAZARDOUS SUBSTANCE which should be handled by trained staff only.   |
| Storage:           | 4 °C,-20 °C  |
| Storage Comment:   | Store at 4°C for three months and -20°C, stable for up to one year. As with all antibodies care should be taken to avoid repeated freeze thaw cycles. Antibodies should not be exposed to prolonged high temperatures. |



Western Blotting

**Image 1.** Western blot analysis in 293 cell line lysates (35ug/lane).



Western Blotting

**Image 2.** Western blot analysis in mouse cerebellum tissue lysates (35ug/lane).