

Datasheet for ABIN5534514
anti-MAP2K5 antibody (AA 127-156)



[Go to Product page](#)

2 Images

Overview

Quantity:	400 µL
Target:	MAP2K5
Binding Specificity:	AA 127-156
Reactivity:	Human
Host:	Rabbit
Clonality:	Polyclonal
Conjugate:	This MAP2K5 antibody is un-conjugated
Application:	Western Blotting (WB), Immunohistochemistry (Paraffin-embedded Sections) (IHC (p))

Product Details

Immunogen:	This MAP2K5 antibody is generated from rabbits immunized with a KLH conjugated synthetic peptide between 127-156 amino acids from human MAP2K5.
Isotype:	Ig Fraction
Purification:	This antibody is purified through a protein A column, followed by peptide affinity purification.

Target Details

Target:	MAP2K5
Alternative Name:	MAP2K5 (MAP2K5 Products)
Background:	MAP2K5 is a dual specificity protein kinase that belongs to the MAP kinase kinase family. It specifically interacts with and activates MAPK7/ERK5. This kinase itself can be phosphorylated and activated by MAP3K3/MEKK3, as well as by atypical protein kinase C isoforms (aPKCs).

Target Details

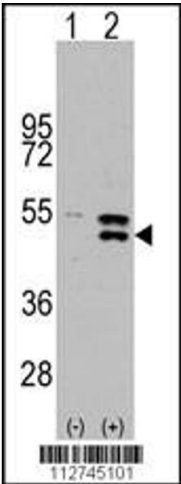
	The signal cascade mediated by MAP2K5 is involved in growth factor stimulated cell proliferation and muscle cell differentiation.
Molecular Weight:	50 kDa
Gene ID:	5607
UniProt:	Q13163
Pathways:	MAPK Signaling , Neurotrophin Signaling Pathway

Application Details

Application Notes:	For WB starting dilution is: 1:1000
	For IHC-P starting dilution is: 1:10~50
Restrictions:	For Research Use only

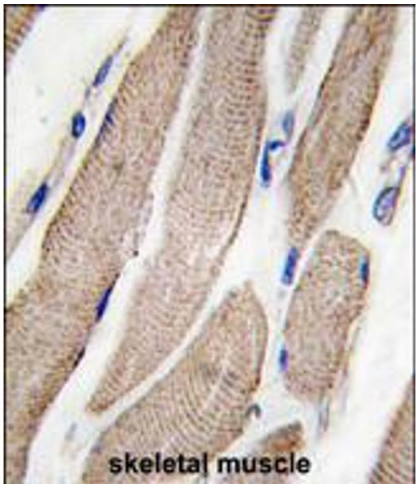
Handling

Format:	Liquid
Buffer:	Supplied in PBS with 0.09 % (W/V) sodium azide.
Preservative:	Sodium azide
Precaution of Use:	This product contains Sodium azide: a POISONOUS AND HAZARDOUS SUBSTANCE which should be handled by trained staff only.
Storage:	4 °C,-20 °C
Storage Comment:	Store at 4°C for three months and -20°C, stable for up to one year. As with all antibodies care should be taken to avoid repeated freeze thaw cycles. Antibodies should not be exposed to prolonged high temperatures.



Western Blotting

Image 1. Western blot analysis of MAP2K5 using rabbit polyclonal MAP2K5 Antibody (S149).293 cell lysates (2 ug/lane) either nontransfected (Lane 1) or transiently transfected with the MAP2K5 gene (Lane 2).



Immunohistochemistry

Image 2. Formalin-fixed and paraffin-embedded human skeletal muscle tissue reacted with MAP2K5 Antibody (S149) , which was peroxidase-conjugated to the secondary antibody, followed by DAB staining.