

Datasheet for ABIN5534517
anti-MAP2K7 antibody (AA 206-233)[Go to Product page](#)

3 Images

Overview

Quantity:	400 µL
Target:	MAP2K7
Binding Specificity:	AA 206-233
Reactivity:	Human, Mouse
Host:	Rabbit
Clonality:	Polyclonal
Conjugate:	This MAP2K7 antibody is un-conjugated
Application:	Western Blotting (WB), Immunohistochemistry (Paraffin-embedded Sections) (IHC (p))

Product Details

Immunogen:	This Mouse Map2k7 antibody is generated from rabbits immunized with a KLH conjugated synthetic peptide between 206-233 amino acids from the Central region of mouse Map2k7.
Isotype:	Ig Fraction
Purification:	This antibody is purified through a protein A column, followed by peptide affinity purification.

Target Details

Target:	MAP2K7
Alternative Name:	Map2k7 (MAP2K7 Products)
Background:	Stress activated, dual specificity kinase that activates the JUN kinases MAPK8/JNK1, MAPK9/JNK2 and MAPK10/JNK3.

Target Details

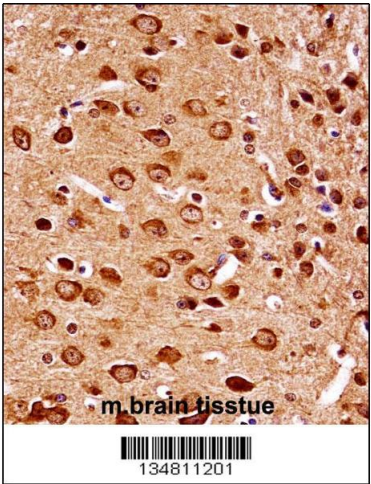
Molecular Weight:	59 kDa
Gene ID:	26400
UniProt:	Q8CE90
Pathways:	MAPK Signaling , TLR Signaling , Fc-epsilon Receptor Signaling Pathway , Activation of Innate immune Response , Toll-Like Receptors Cascades , BCR Signaling

Application Details

Application Notes:	For WB starting dilution is: 1:1000 For IHC-P starting dilution is: 1:10~50
Restrictions:	For Research Use only

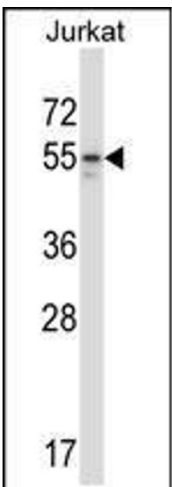
Handling

Format:	Liquid
Concentration:	0.5 mg/mL
Buffer:	Supplied in PBS with 0.09 % (W/V) sodium azide.
Preservative:	Sodium azide
Precaution of Use:	This product contains Sodium azide: a POISONOUS AND HAZARDOUS SUBSTANCE which should be handled by trained staff only.
Storage:	4 °C, -20 °C
Storage Comment:	Store at 4°C for three months and -20°C, stable for up to one year. As with all antibodies care should be taken to avoid repeated freeze thaw cycles. Antibodies should not be exposed to prolonged high temperatures.



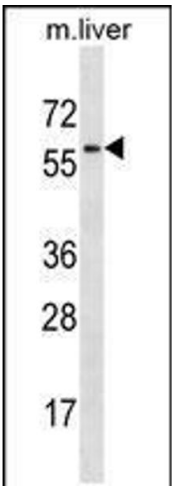
Immunohistochemistry

Image 1. Mouse Map2k7 Antibody immunohistochemistry analysis in formalin fixed and paraffin embedded mouse brain tissue followed by peroxidase conjugation of the secondary antibody and DAB staining.



Western Blotting

Image 2. Western blot analysis in Jurkat cell line lysates (35ug/lane).



Western Blotting

Image 3. Western blot analysis in mouse liver tissue lysates (35ug/lane).