

Datasheet for ABIN5534519
anti-MAP4K4 antibody (AA 506-534)



[Go to Product page](#)

2 Images

Overview

Quantity:	400 µL
Target:	MAP4K4
Binding Specificity:	AA 506-534
Reactivity:	Human, Mouse
Host:	Rabbit
Clonality:	Polyclonal
Conjugate:	This MAP4K4 antibody is un-conjugated
Application:	Western Blotting (WB)

Product Details

Immunogen:	This Mouse Map4k4 antibody is generated from rabbits immunized with a KLH conjugated synthetic peptide between 506-534 amino acids from the Central region of mouse Map4k4.
Isotype:	Ig Fraction
Purification:	This antibody is purified through a protein A column, followed by peptide affinity purification.

Target Details

Target:	MAP4K4
Alternative Name:	Map4k4 (MAP4K4 Products)
Background:	Serine/threonine kinase that may play a role in the response to environmental stress and cytokines such as TNF-alpha. Appears to act upstream of the JUN N-terminal pathway.

Target Details

Molecular Weight: 141 kDa

Gene ID: 26921

UniProt: [P97820](#)

Application Details

Application Notes: For WB starting dilution is: 1:1000

Restrictions: For Research Use only

Handling

Format: Liquid

Concentration: 0.5 mg/mL

Buffer: Supplied in PBS with 0.09 % (W/V) sodium azide.

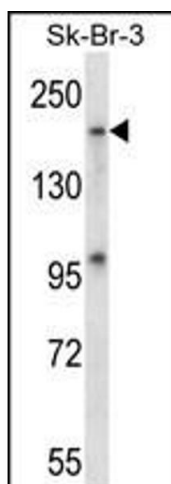
Preservative: Sodium azide

Precaution of Use: This product contains Sodium azide: a POISONOUS AND HAZARDOUS SUBSTANCE which should be handled by trained staff only.

Storage: 4 °C, -20 °C

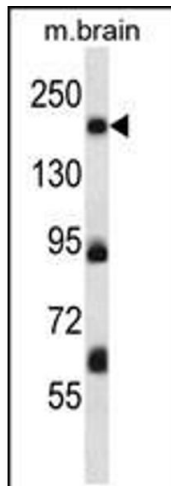
Storage Comment: Store at 4°C for three months and -20°C, stable for up to one year. As with all antibodies care should be taken to avoid repeated freeze thaw cycles. Antibodies should not be exposed to prolonged high temperatures.

Images



Western Blotting

Image 1. Western blot analysis in SK-BR-3 cell line lysates (35ug/lane).



Western Blotting

Image 2. Western blot analysis in mouse brain tissue lysates (35ug/lane).