



[Go to Product page](#)

Datasheet for ABIN5534533
anti-MLKL antibody (C-Term)

3 Images

Overview

Quantity:	200 µL
Target:	MLKL
Binding Specificity:	AA 444-472, C-Term
Reactivity:	Mouse
Host:	Rabbit
Clonality:	Polyclonal
Conjugate:	This MLKL antibody is un-conjugated
Application:	Western Blotting (WB)

Product Details

Immunogen:	This Mouse Mkl antibody is generated from rabbits immunized with a KLH conjugated synthetic peptide between 444-472 amino acids from the C-terminal region of mouse Mkl.
Isotype:	Ig Fraction
Purification:	This antibody is purified through a protein A column, followed by peptide affinity purification.

Target Details

Target:	MLKL
Alternative Name:	Mkl (MLKL Products)
Background:	The protein kinase domain is predicted to be catalytically inactive. Molecular function: protein binding. There are two isoforms.

Target Details

Molecular Weight:	54 kDa
Gene ID:	74568
UniProt:	Q9D2Y4

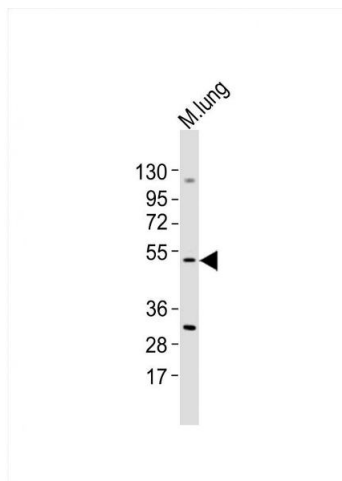
Application Details

Application Notes:	For WB starting dilution is: 1:2000
Restrictions:	For Research Use only

Handling

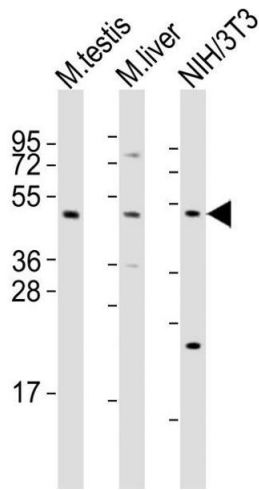
Format:	Liquid
Concentration:	0.32 mg/mL
Buffer:	Supplied in PBS with 0.09 % (W/V) sodium azide.
Preservative:	Sodium azide
Precaution of Use:	This product contains Sodium azide: a POISONOUS AND HAZARDOUS SUBSTANCE which should be handled by trained staff only.
Storage:	4 °C, -20 °C
Storage Comment:	Store at 4°C for three months and -20°C, stable for up to one year. As with all antibodies care should be taken to avoid repeated freeze thaw cycles. Antibodies should not be exposed to prolonged high temperatures.

Images



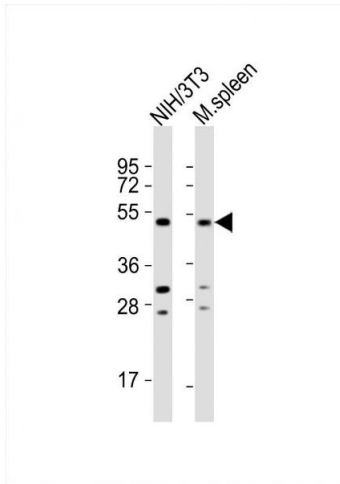
Western Blotting

Image 1. Western Blot at 1:1000 dilution + mouse lung lysates Lysates/proteins at 20 ug per lane.



Western Blotting

Image 2. Western Blot at 1:2000 dilution Lane 1: mouse testis lysates Lane 2: mouse liver lysates Lane 3: NIH/3T3 whole cell lysates Lysates/proteins at 20 ug per lane.



Western Blotting

Image 3. Western Blot at 1:2000 dilution Lane 1: NIH/3T3 whole cell lysates Lane 2: mouse spleen lysates Lysates/proteins at 20 ug per lane.