

Datasheet for ABIN5534554
anti-NMT2 antibody (C-Term)

2 Images

[Go to Product page](#)

Overview

Quantity:	400 µL
Target:	NMT2
Binding Specificity:	AA 125-153, C-Term
Reactivity:	Human
Host:	Rabbit
Clonality:	Polyclonal
Conjugate:	This NMT2 antibody is un-conjugated
Application:	Western Blotting (WB)

Product Details

Immunogen:	This NMT2 antibody is generated from rabbits immunized with a KLH conjugated synthetic peptide between 125-153 amino acids from the C-terminal region of human NMT2.
Isotype:	Ig Fraction
Purification:	This antibody is purified through a protein A column, followed by peptide affinity purification.

Target Details

Target:	NMT2
Alternative Name:	NMT2 (NMT2 Products)
Background:	N-myristoyltransferase (NMT) catalyzes the reaction of N-terminal myristoylation of many signaling proteins. It transfers myristic acid from myristoyl coenzyme A to the amino group of a protein's N-terminal glycine residue. Biochemical evidence indicates the presence of several

Target Details

distinct NMTs, varying in apparent molecular weight and /or subcellular distribution. The predicted 498-amino acid of human NMT2 protein shares 77 % and 96 % sequence identity with human NMT1 and mouse Nmt2 comprise two distinct families of N-myristoyltransferases.

Molecular Weight: 57 kDa

Gene ID: 9397

UniProt: [O60551](#)

Pathways: [Regulation of G-Protein Coupled Receptor Protein Signaling](#)

Application Details

Application Notes: For WB starting dilution is: 1:1000

Restrictions: For Research Use only

Handling

Format: Liquid

Concentration: 0.5 mg/mL

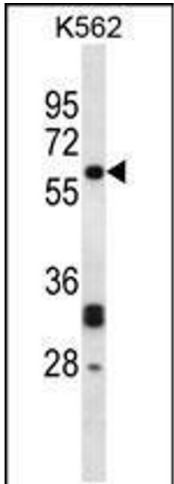
Buffer: Supplied in PBS with 0.09 % (W/V) sodium azide.

Preservative: Sodium azide

Precaution of Use: This product contains Sodium azide: a POISONOUS AND HAZARDOUS SUBSTANCE which should be handled by trained staff only.

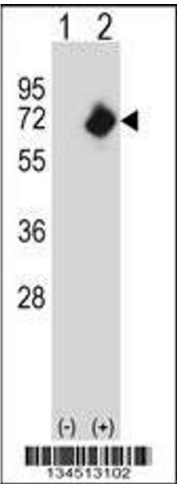
Storage: 4 °C, -20 °C

Storage Comment: Store at 4°C for three months and -20°C, stable for up to one year. As with all antibodies care should be taken to avoid repeated freeze thaw cycles. Antibodies should not be exposed to prolonged high temperatures.



Western Blotting

Image 1. Western blot analysis in K562 cell line lysates (35ug/lane).



Western Blotting

Image 2. Western blot analysis of NMT2 using rabbit polyclonal NMT2 Antibody using 293 cell lysates (2 ug/lane) either nontransfected (Lane 1) or transiently transfected (Lane 2) with the NMT2 gene.