

Datasheet for ABIN5534580
anti-P-Cadherin antibody (N-Term)

3 Images

[Go to Product page](#)

Overview

Quantity:	400 µL
Target:	P-Cadherin (CDH3)
Binding Specificity:	AA 114-142, N-Term
Reactivity:	Human
Host:	Rabbit
Clonality:	Polyclonal
Conjugate:	This P-Cadherin antibody is un-conjugated
Application:	Western Blotting (WB), Flow Cytometry (FACS), Immunohistochemistry (Paraffin-embedded Sections) (IHC (p))

Product Details

Immunogen:	This CDH3 antibody is generated from rabbits immunized with a KLH conjugated synthetic peptide between 114-142 amino acids from the N-terminal region of human CDH3.
Isotype:	Ig Fraction
Purification:	This antibody is purified through a protein A column, followed by peptide affinity purification.

Target Details

Target:	P-Cadherin (CDH3)
Alternative Name:	CDH3 (CDH3 Products)
Background:	CDH3 is a classical cadherin from the cadherin superfamily. It is a calcium-dependent cell-cell adhesion glycoprotein comprised of five extracellular cadherin repeats, a transmembrane

Target Details

region and a highly conserved cytoplasmic tail. Aberrant expression of this protein is observed in cervical adenocarcinomas. Mutations in the gene encoding CDH3 have been associated with congenital hypotrichosis with juvenile macular dystrophy.

Molecular Weight: 91 kDa

Gene ID: 1001

UniProt: [P22223](#)

Application Details

Application Notes: For WB starting dilution is: 1:1000

For IHC-P starting dilution is: 1:10~50

For FACS starting dilution is: 1:10~50

Restrictions: For Research Use only

Handling

Format: Liquid

Concentration: 0.35 mg/mL

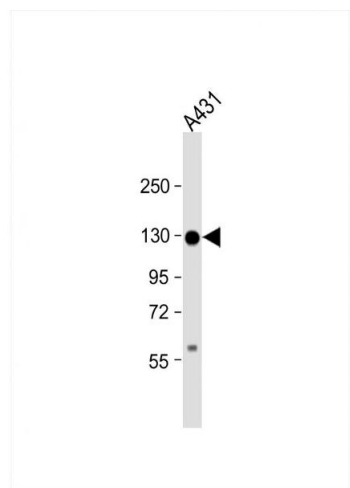
Buffer: Supplied in PBS with 0.09 % (W/V) sodium azide.

Preservative: Sodium azide

Precaution of Use: This product contains Sodium azide: a POISONOUS AND HAZARDOUS SUBSTANCE which should be handled by trained staff only.

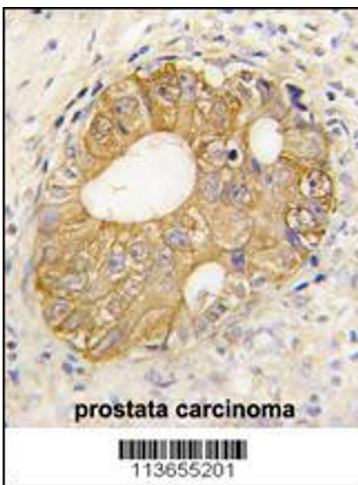
Storage: 4 °C, -20 °C

Storage Comment: Store at 4°C for three months and -20°C, stable for up to one year. As with all antibodies care should be taken to avoid repeated freeze thaw cycles. Antibodies should not be exposed to prolonged high temperatures.



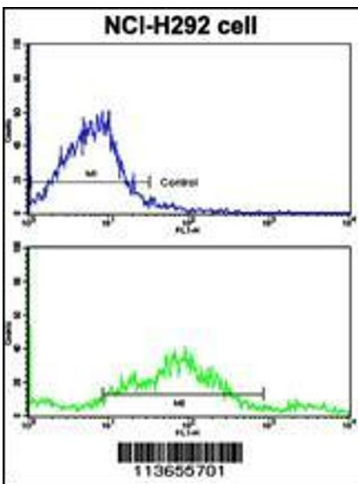
Western Blotting

Image 1. Western Blot at 1:1000 dilution + A431 whole cell lysate Lysates/proteins at 20 ug per lane.



Immunohistochemistry

Image 2. Formalin-fixed and paraffin-embedded human prostata carcinoma tissue reacted with CDH3 antibody , which was peroxidase-conjugated to the secondary antibody, followed by DAB staining.



Flow Cytometry

Image 3. Flow cytometric analysis of NCI-H292 cells using CDH3 Antibody (N-term)(bottom histogram) compared to a negative control cell (top histogram). FITC-conjugated goat-anti-rabbit secondary antibodies were used for the analysis.