



[Go to Product page](#)

Datasheet for ABIN5534600
anti-PHLDA2 antibody (C-Term)

2 Images

Overview

Quantity:	400 µL
Target:	PHLDA2
Binding Specificity:	AA 90-119, C-Term
Reactivity:	Human
Host:	Rabbit
Clonality:	Polyclonal
Conjugate:	This PHLDA2 antibody is un-conjugated
Application:	Western Blotting (WB), Immunohistochemistry (Paraffin-embedded Sections) (IHC (p))

Product Details

Immunogen:	This PHLDA2 antibody is generated from rabbits immunized with a KLH conjugated synthetic peptide between 90-119 amino acids from the C-terminal region of human PHLDA2.
Isotype:	Ig Fraction
Purification:	This antibody is purified through a protein A column, followed by peptide affinity purification.

Target Details

Target:	PHLDA2
Alternative Name:	PHLDA2 (PHLDA2 Products)
Background:	This gene is located in a cluster of imprinted genes on chromosome 11p15.5, which is considered to be an important tumor suppressor gene region. Alterations in this region may be associated with the Beckwith-Wiedemann syndrome, Wilms tumor, rhabdomyosarcoma,

Target Details

adrenocortical carcinoma, and lung, ovarian, and breast cancer. This gene has been shown to be imprinted, with preferential expression from the maternal allele in placenta and liver.

Molecular Weight: 17 kDa

Gene ID: 7262

UniProt: [Q53GA4](#)

Pathways: [Regulation of Carbohydrate Metabolic Process](#)

Application Details

Application Notes: For WB starting dilution is: 1:1000

For IHC-P starting dilution is: 1:10~50

Restrictions: For Research Use only

Handling

Format: Liquid

Concentration: 0.5 mg/mL

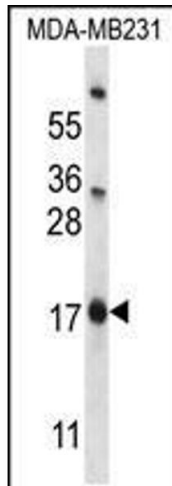
Buffer: Supplied in PBS with 0.09 % (W/V) sodium azide.

Preservative: Sodium azide

Precaution of Use: This product contains Sodium azide: a POISONOUS AND HAZARDOUS SUBSTANCE which should be handled by trained staff only.

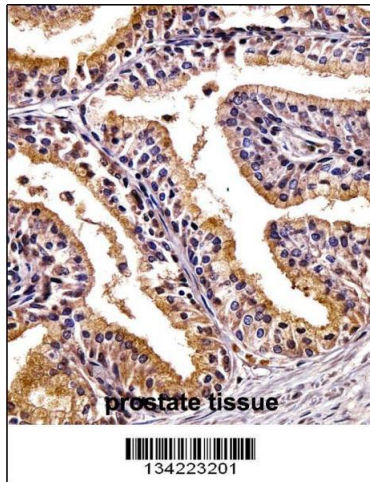
Storage: 4 °C,-20 °C

Storage Comment: Store at 4°C for three months and -20°C, stable for up to one year. As with all antibodies care should be taken to avoid repeated freeze thaw cycles. Antibodies should not be exposed to prolonged high temperatures.



Western Blotting

Image 1. Western blot analysis in MDA-MB231 cell line lysates (35ug/lane).



Immunohistochemistry

Image 2. PHLDA2 Antibody immunohistochemistry analysis in formalin fixed and paraffin embedded human prostate tissue followed by peroxidase conjugation of the secondary antibody and DAB staining.