



[Go to Product page](#)

Datasheet for ABIN5534675
anti-RUNX3 antibody (AA 168-197)

3 Images

Overview

Quantity:	400 µL
Target:	RUNX3
Binding Specificity:	AA 168-197
Reactivity:	Human
Host:	Rabbit
Clonality:	Polyclonal
Conjugate:	This RUNX3 antibody is un-conjugated
Application:	Western Blotting (WB), Immunofluorescence (IF), Immunohistochemistry (Paraffin-embedded Sections) (IHC (p))

Product Details

Immunogen:	This RUNX3 antibody is generated from rabbits immunized with a KLH conjugated synthetic peptide between 168-197 amino acids from the Central region of human RUNX3.
Isotype:	Ig Fraction
Purification:	This antibody is purified through a protein A column, followed by peptide affinity purification.

Target Details

Target:	RUNX3
Alternative Name:	RUNX3 (RUNX3 Products)
Background:	This gene encodes a member of the runt domain-containing family of transcription factors. A heterodimer of this protein and a beta subunit forms a complex that binds to the core DNA

Target Details

sequence 5'-PYGPYGGT-3' found in a number of enhancers and promoters, and can either activate or suppress transcription. It also interacts with other transcription factors. It functions as a tumor suppressor, and the gene is frequently deleted or transcriptionally silenced in cancer. Multiple transcript variants encoding different isoforms have been found for this gene.

Molecular Weight: 44 kDa

Gene ID: 864

UniProt: [Q13761](#)

Application Details

Application Notes: For WB starting dilution is: 1:1000

For IHC-P starting dilution is: 1:10~50

For IF starting dilution is: 1:10~50

Restrictions: For Research Use only

Handling

Format: Liquid

Concentration: 0.49 mg/mL

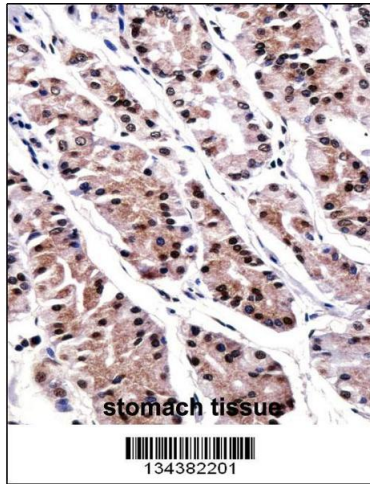
Buffer: Supplied in PBS with 0.09 % (W/V) sodium azide.

Preservative: Sodium azide

Precaution of Use: This product contains Sodium azide: a POISONOUS AND HAZARDOUS SUBSTANCE which should be handled by trained staff only.

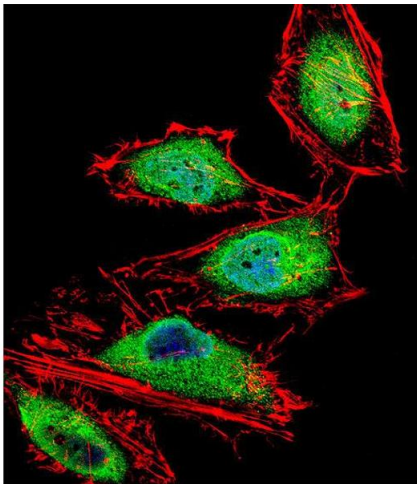
Storage: 4 °C,-20 °C

Storage Comment: Store at 4°C for three months and -20°C, stable for up to one year. As with all antibodies care should be taken to avoid repeated freeze thaw cycles. Antibodies should not be exposed to prolonged high temperatures.



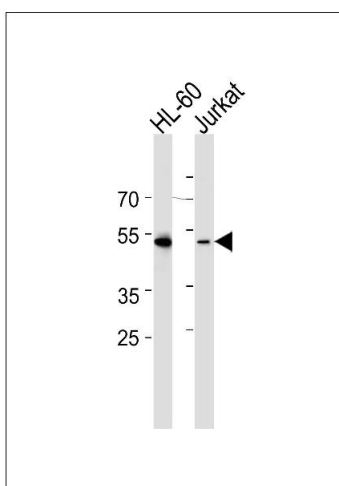
Immunohistochemistry

Image 1. RUNX3 Antibody immunohistochemistry analysis in formalin fixed and paraffin embedded human stomach tissue followed by peroxidase conjugation of the secondary antibody and DAB staining.



Immunofluorescence

Image 2. Fluorescent confocal image of HeLa cell stained with RUNX3 Antibody .HeLa cells were fixed with 4% PFA (20 min), permeabilized with Triton X-100 (0.1%, 10 min), then incubated with RUNX3 primary antibody (1:25). For secondary antibody, Alexa Fluor 488 conjugated donkey anti-rabbit antibody (green) was used (1:400).Cytoplasmic actin was counterstained with Alexa Fluor 555 (red) conjugated Phalloidin (7units/ml). Nuclei were counterstained with DAPI (blue) (10 ug/ml, 10 min). RUNX3 immunoreactivity is localized to Nucleus and Cytoplasm significantly.



Western Blotting

Image 3. Western blot analysis of lysates from HL-60, Jurkat cell line (from left to right), using RUNX3 Antibody at 1:1000 at each lane.