

Datasheet for ABIN5534686
anti-SIGLEC6 antibody (C-Term)[Go to Product page](#)

3 Images

Overview

Quantity:	400 µL
Target:	SIGLEC6
Binding Specificity:	AA 381-412, C-Term
Reactivity:	Human, Mouse
Host:	Rabbit
Clonality:	Polyclonal
Conjugate:	This SIGLEC6 antibody is un-conjugated
Application:	Western Blotting (WB), Immunohistochemistry (Paraffin-embedded Sections) (IHC (p))

Product Details

Immunogen:	This SIGLEC6 antibody is generated from rabbits immunized with a KLH conjugated synthetic peptide between 381-412 amino acids from the C-terminal region of human SIGLEC6.
Isotype:	Ig Fraction
Purification:	This antibody is purified through a protein A column, followed by peptide affinity purification.

Target Details

Target:	SIGLEC6
Alternative Name:	SIGLEC6 (SIGLEC6 Products)
Background:	SIGLEC6 is a putative adhesion molecule that mediates sialic-acid dependent binding to cells by binding to alpha2,6-linked sialic acid. The sialic acid recognition site may be masked by cis interactions with sialic acids on the same cell surface. SIGLEC6, which interacts with LEP, is

Target Details

expressed at high levels in placenta (cyto-and syncytiotrophoblastic cells) and at lower levels in spleen, peripheral blood leukocytes (predominantly B-cells) and small intestine. It contains 1 copy of a cytoplasmic motif that is referred to as the immunoreceptor tyrosine-based inhibitor motif (ITIM). This motif is involved in downmodulation of cellular responses. The phosphorylated ITIM motif binds to the SH2 domain of PTPN6/SHP-1. The gene for SIGLEC6 belongs to the immunoglobulin superfamily.

Molecular Weight:	50 kDa
-------------------	--------

Gene ID:	946
----------	-----

UniProt:	O43699
----------	------------------------

Application Details

Application Notes:	For IHC-P starting dilution is: 1:50~100
--------------------	--

	For WB starting dilution is: 1:1000
--	-------------------------------------

Restrictions:	For Research Use only
---------------	-----------------------

Handling

Format:	Liquid
---------	--------

Concentration:	0.5 mg/mL
----------------	-----------

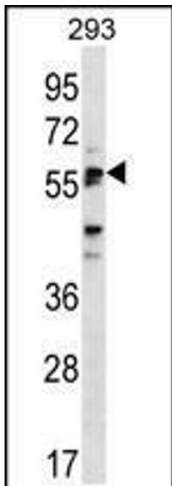
Buffer:	Supplied in PBS with 0.09 % (W/V) sodium azide.
---------	---

Preservative:	Sodium azide
---------------	--------------

Precaution of Use:	This product contains Sodium azide: a POISONOUS AND HAZARDOUS SUBSTANCE which should be handled by trained staff only.
--------------------	--

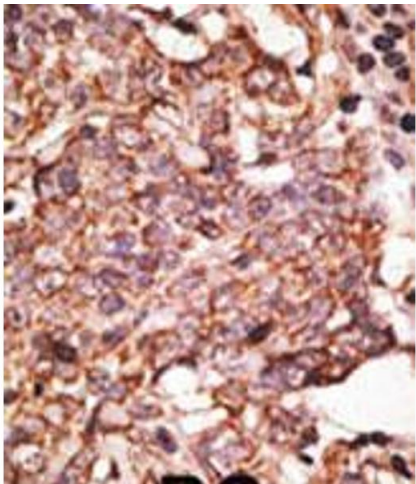
Storage:	4 °C,-20 °C
----------	-------------

Storage Comment:	Store at 4°C for three months and -20°C, stable for up to one year. As with all antibodies care should be taken to avoid repeated freeze thaw cycles. Antibodies should not be exposed to prolonged high temperatures.
------------------	--



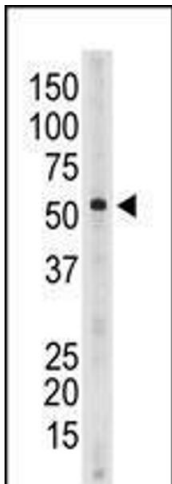
Western Blotting

Image 1. Western blot analysis in 293 cell line lysates (35ug/lane).



Immunohistochemistry

Image 2. Formalin-fixed and paraffin-embedded human cancer tissue reacted with the primary antibody, which was peroxidase-conjugated to the secondary antibody, followed by AEC staining. BC = breast carcinoma; HC = hepatocarcinoma.



Western Blotting

Image 3. Antibody is used in Western blot to detect Siglec6 in mouse spleen tissue lysate.