

Datasheet for ABIN5534691

anti-SLC28A2 antibody (N-Term)[Go to Product page](#)**1** Image

Overview

Quantity:	400 µL
Target:	SLC28A2
Binding Specificity:	AA 14-42, N-Term
Reactivity:	Human
Host:	Rabbit
Clonality:	Polyclonal
Conjugate:	This SLC28A2 antibody is un-conjugated
Application:	Western Blotting (WB)

Product Details

Immunogen:	This SLC28A2 antibody is generated from rabbits immunized with a KLH conjugated synthetic peptide between 14-42 amino acids from the N-terminal region of human SLC28A2.
Isotype:	Ig Fraction
Purification:	This antibody is purified through a protein A column, followed by peptide affinity purification.

Target Details

Target:	SLC28A2
Alternative Name:	SLC28A2 (SLC28A2 Products)
Background:	Sodium-dependent and purine-selective transporter. Exhibits the transport characteristics of the nucleoside transport system cif or N1 subtype (N1/cif) (selective for purine nucleosides and uridine). Plays a critical role in specific uptake and salvage of purine nucleosides in kidney and

Target Details

other tissues.

Molecular Weight: 72 kDa

Gene ID: 9153

UniProt: [O43868](#)

Application Details

Application Notes: For WB starting dilution is: 1:1000

Restrictions: For Research Use only

Handling

Format: Liquid

Buffer: Supplied in PBS with 0.09 % (W/V) sodium azide.

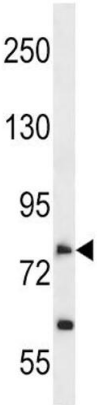
Preservative: Sodium azide

Precaution of Use: This product contains Sodium azide: a POISONOUS AND HAZARDOUS SUBSTANCE which should be handled by trained staff only.

Storage: 4 °C, -20 °C

Storage Comment: Store at 4°C for three months and -20°C, stable for up to one year. As with all antibodies care should be taken to avoid repeated freeze thaw cycles. Antibodies should not be exposed to prolonged high temperatures.

Images



Western Blotting

Image 1. Western blot analysis in A549 cell line lysates (35ug/lane).