

Datasheet for ABIN5534697
anti-SLC7A1 antibody (C-Term)

2 Images

[Go to Product page](#)

Overview

Quantity:	400 µL
Target:	SLC7A1
Binding Specificity:	AA 429-457, C-Term
Reactivity:	Human
Host:	Rabbit
Clonality:	Polyclonal
Conjugate:	This SLC7A1 antibody is un-conjugated
Application:	Western Blotting (WB)

Product Details

Immunogen:	This SLC7A1 antibody is generated from rabbits immunized with a KLH conjugated synthetic peptide between 429-457 amino acids from the C-terminal region of human SLC7A1.
Isotype:	Ig Fraction
Purification:	This antibody is purified through a protein A column, followed by peptide affinity purification.

Target Details

Target:	SLC7A1
Alternative Name:	SLC7A1 (SLC7A1 Products)
Background:	High-affinity, low capacity permease involved in the transport of the cationic amino acids (arginine, lysine and ornithine) in non-hepatic tissues. May also function as an ecotropic retroviral leukemia receptor.

Target Details

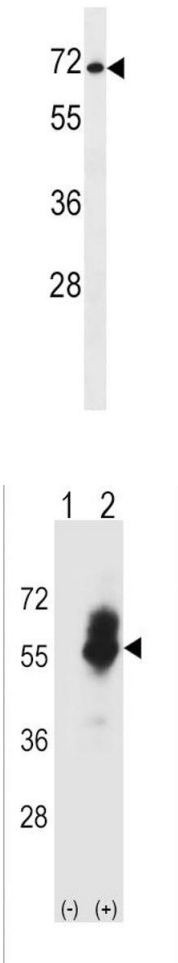
Molecular Weight:	68 kDa
Gene ID:	6541
UniProt:	P30825
Pathways:	Dicarboxylic Acid Transport

Application Details

Application Notes:	For WB starting dilution is: 1:1000
Restrictions:	For Research Use only

Handling

Format:	Liquid
Concentration:	0.5 mg/mL
Buffer:	Supplied in PBS with 0.09 % (W/V) sodium azide.
Preservative:	Sodium azide
Precaution of Use:	This product contains Sodium azide: a POISONOUS AND HAZARDOUS SUBSTANCE which should be handled by trained staff only.
Storage:	4 °C,-20 °C
Storage Comment:	Store at 4°C for three months and -20°C, stable for up to one year. As with all antibodies care should be taken to avoid repeated freeze thaw cycles. Antibodies should not be exposed to prolonged high temperatures.



Western Blotting

Image 1. Western blot analysis in NCI-H460 cell line lysates (35ug/lane).

Western Blotting

Image 2. Western blot analysis of SLC7A1 using rabbit polyclonal SLC7A1 Antibody using 293 cell lysates (2 ug/lane) either nontransfected (Lane 1) or transiently transfected (Lane 2) with the SLC7A1 gene.