

Datasheet for ABIN5534706
anti-SIGLEC5 antibody (N-Term)



[Go to Product page](#)

1 Image

Overview

Quantity:	400 µL
Target:	SIGLEC5
Binding Specificity:	AA 104-132, N-Term
Reactivity:	Human
Host:	Rabbit
Clonality:	Polyclonal
Conjugate:	This SIGLEC5 antibody is un-conjugated
Application:	Western Blotting (WB)

Product Details

Immunogen:	This SIGLEC5 antibody is generated from rabbits immunized with a KLH conjugated synthetic peptide between 104-132 amino acids from the N-terminal region of human SIGLEC5.
Isotype:	Ig Fraction
Purification:	This antibody is purified through a protein A column, followed by peptide affinity purification.

Target Details

Target:	SIGLEC5
Alternative Name:	SIGLEC5 (SIGLEC5 Products)
Background:	The sialic acid-binding immunoglobulin-like lectins (SIGLECs), such as SIGLEC5, are a subgroup of the immunoglobulin (Ig) superfamily that mediate protein-carbohydrate interactions. They specifically interact with sialic acids in glycoproteins and glycolipids, with each SIGLEC having a

Target Details

particular preference for both the nature of the sialic acid and its glycosidic linkage to adjacent sugars. SIGLECs have similar structures, including extracellular Ig-like domains composed of an N-terminal V-set domain followed by varying numbers of C2-set domains. It appears that all SIGLECs have an unusual arrangement of conserved cysteine residues in the V-set and adjacent C2-set domains. Most SIGLECs are expressed uniquely within the hematopoietic system (Cornish et al., 1998 [PubMed 9731071]).

Molecular Weight: 61 kDa

Gene ID: 8778

UniProt: [O15389](#)

Application Details

Application Notes: For WB starting dilution is: 1:1000

Restrictions: For Research Use only

Handling

Format: Liquid

Concentration: 0.5 mg/mL

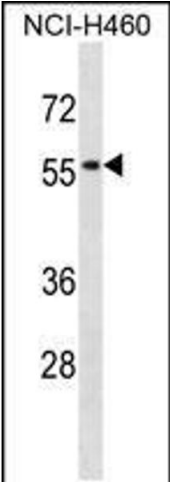
Buffer: Supplied in PBS with 0.09 % (W/V) sodium azide.

Preservative: Sodium azide

Precaution of Use: This product contains Sodium azide: a POISONOUS AND HAZARDOUS SUBSTANCE which should be handled by trained staff only.

Storage: 4 °C, -20 °C

Storage Comment: Store at 4°C for three months and -20°C, stable for up to one year. As with all antibodies care should be taken to avoid repeated freeze thaw cycles. Antibodies should not be exposed to prolonged high temperatures.



Western Blotting

Image 1. Western blot analysis in NCI-H460 cell line lysates (35ug/lane).