

Datasheet for ABIN5534708  
**anti-SIGLEC9 antibody (C-Term)**[Go to Product page](#)

## 3 Images

## Overview

Quantity:	400 µL
Target:	SIGLEC9
Binding Specificity:	AA 385-415, C-Term
Reactivity:	Human, Mouse
Host:	Rabbit
Clonality:	Polyclonal
Conjugate:	This SIGLEC9 antibody is un-conjugated
Application:	Western Blotting (WB), Immunohistochemistry (Paraffin-embedded Sections) (IHC (p))

## Product Details

Immunogen:	This SIGLEC9 antibody is generated from rabbits immunized with a KLH conjugated synthetic peptide between 385-415 amino acids from the C-terminal region of human SIGLEC9.
Isotype:	Ig Fraction
Purification:	This antibody is prepared by Saturated Ammonium Sulfate (SAS) precipitation followed by dialysis

## Target Details

Target:	SIGLEC9
Alternative Name:	SIGLEC9 ( <a href="#">SIGLEC9 Products</a> )
Background:	SIGLEC9 is a putative adhesion molecule that mediates sialic-acid dependent binding to cells. It preferentially binds to alpha-2,3- or alpha-2,6-linked sialic acid. The sialic acid recognition site

## Target Details

may be masked by cis interactions with sialic acids on the same cell surface. This protein is expressed by peripheral blood leukocytes (neutrophils and monocytes but not eosinophils). It is found in liver, fetal liver, bone marrow, placenta, spleen and in lower levels in skeletal muscle, fetal brain, stomach, lung, thymus, prostate, brain, mammary, adrenal gland, colon, trachea, cerebellum, testis, small intestine and spinal cord. SIGLEC9 contains 1 copy of a cytoplasmic motif that is referred to as the immunoreceptor tyrosine-based inhibitor motif (ITIM). This motif is involved in modulation of cellular responses. The phosphorylated ITIM motif can bind the SH2 domain of several SH2-containing phosphatases.

Molecular Weight: 50 kDa

Gene ID: 27180

UniProt: [Q9Y336](#)

## Application Details

Application Notes: For WB starting dilution is: 1:1000

For IHC-P starting dilution is: 1:50~100

Restrictions: For Research Use only

## Handling

Format: Liquid

Concentration: 2 mg/mL

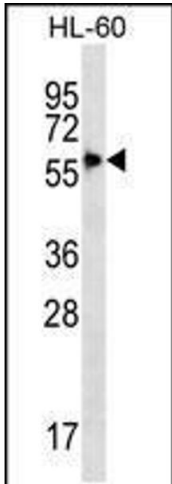
Buffer: Supplied in PBS with 0.09 % (W/V) sodium azide.

Preservative: Sodium azide

Precaution of Use: This product contains Sodium azide: a POISONOUS AND HAZARDOUS SUBSTANCE which should be handled by trained staff only.

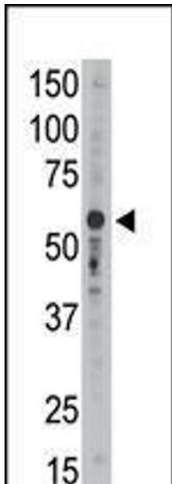
Storage: 4 °C, -20 °C

Storage Comment: Store at 4°C for three months and -20°C, stable for up to one year. As with all antibodies care should be taken to avoid repeated freeze thaw cycles. Antibodies should not be exposed to prolonged high temperatures.



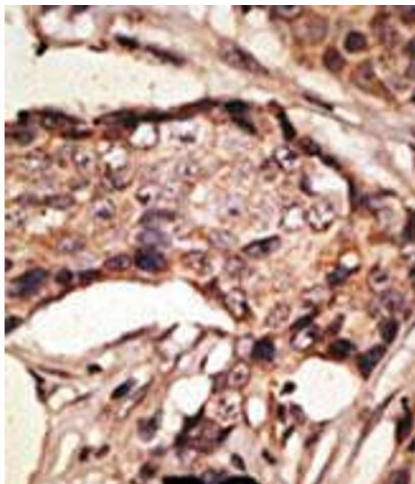
#### Western Blotting

**Image 1.** Western blot analysis in HL-60 cell line lysates (35ug/lane).



#### Western Blotting

**Image 2.** Antibody is used in Western blot to detect Siglec9 in mouse liver tissue lysate.



#### Immunohistochemistry

**Image 3.** Formalin-fixed and paraffin-embedded human cancer tissue reacted with the primary antibody, which was peroxidase-conjugated to the secondary antibody, followed by AEC staining. BC = breast carcinoma; HC = hepatocarcinoma.