



Datasheet for ABIN5534968
anti-DPY19L1 antibody (C-Term)



[Go to Product page](#)

3 Images

Overview

Quantity:	400 µL
Target:	DPY19L1
Binding Specificity:	AA 557-586, C-Term
Reactivity:	Human
Host:	Rabbit
Clonality:	Polyclonal
Conjugate:	This DPY19L1 antibody is un-conjugated
Application:	Western Blotting (WB), Flow Cytometry (FACS), Immunohistochemistry (Paraffin-embedded Sections) (IHC (p))

Product Details

Immunogen:	This DPY19L1 antibody is generated from rabbits immunized with a KLH conjugated synthetic peptide between 557-586 amino acids from the C-terminal region of human DPY19L1.
Isotype:	Ig Fraction
Purification:	This antibody is purified through a protein A column, followed by peptide affinity purification.

Target Details

Target:	DPY19L1
Alternative Name:	DPY19L1 (DPY19L1 Products)
Background:	Belongs to the DPY19 family. There are two named isoforms. The specific function of DPY19L1 is not yet known.

Target Details

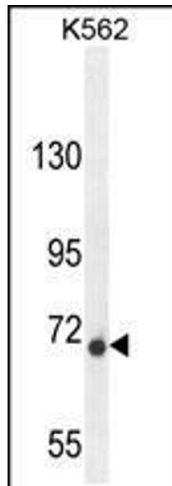
Molecular Weight:	77 kDa
Gene ID:	23333
UniProt:	Q2PZ11
Pathways:	SARS-CoV-2 Protein Interactome

Application Details

Application Notes:	For WB starting dilution is: 1:1000
	For IHC-P starting dilution is: 1:50~100
	For FACS starting dilution is: 1:10~50
Restrictions:	For Research Use only

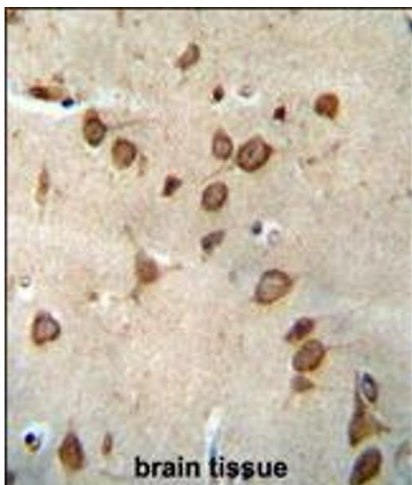
Handling

Format:	Liquid
Concentration:	0.5 mg/mL
Buffer:	Supplied in PBS with 0.09 % (W/V) sodium azide.
Preservative:	Sodium azide
Precaution of Use:	This product contains Sodium azide: a POISONOUS AND HAZARDOUS SUBSTANCE which should be handled by trained staff only.
Storage:	4 °C,-20 °C
Storage Comment:	Store at 4°C for three months and -20°C, stable for up to one year. As with all antibodies care should be taken to avoid repeated freeze thaw cycles. Antibodies should not be exposed to prolonged high temperatures.



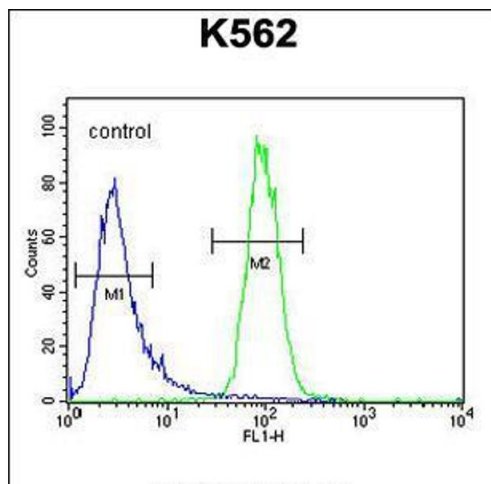
Western Blotting

Image 1. Western blot analysis in K562 cell line lysates (35ug/lane).



Immunohistochemistry

Image 2. DPY19L1 antibody immunohistochemistry analysis in formalin fixed and paraffin embedded human brain tissue followed by peroxidase conjugation of the secondary antibody and DAB staining.



Flow Cytometry

Image 3. Flow cytometric analysis of K562 cells (right histogram) compared to a negative control cell (left histogram). FITC-conjugated goat-anti-rabbit secondary antibodies were used for the analysis.