

Datasheet for ABIN5534990
anti-INA antibody (AA 290-319)



[Go to Product page](#)

2 Images

Overview

Quantity:	400 µL
Target:	INA
Binding Specificity:	AA 290-319
Reactivity:	Human
Host:	Rabbit
Clonality:	Polyclonal
Conjugate:	This INA antibody is un-conjugated
Application:	Western Blotting (WB), Immunohistochemistry (Paraffin-embedded Sections) (IHC (p))

Product Details

Immunogen:	This INA (alpha internexin) antibody is generated from rabbits immunized with a KLH conjugated synthetic peptide between 290-319 amino acids from the Central region of human INA (alpha internexin).
Isotype:	Ig Fraction
Purification:	This antibody is purified through a protein A column, followed by peptide affinity purification.

Target Details

Target:	INA
Alternative Name:	INA (INA Products)
Background:	INA is a class-IV neuronal intermediate filament that is able to self-assemble. It is involved in the morphogenesis of neurons. It may form an independent structural network without the

Target Details

involvement of other neurofilaments or it may cooperate with NF-L to form the filamentous backbone to which NF-M and NF-H attach to form the cross-bridges.

Molecular Weight: 55 kDa

Gene ID: 9118

UniProt: [Q16352](#)

Application Details

Application Notes: For WB starting dilution is: 1:1000

For IHC-P starting dilution is: 1:10~50

Restrictions: For Research Use only

Handling

Format: Liquid

Concentration: 0.5 mg/mL

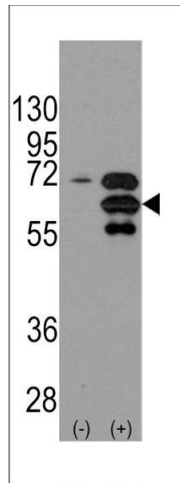
Buffer: Supplied in PBS with 0.09 % (W/V) sodium azide.

Preservative: Sodium azide

Precaution of Use: This product contains Sodium azide: a POISONOUS AND HAZARDOUS SUBSTANCE which should be handled by trained staff only.

Storage: 4 °C, -20 °C

Storage Comment: Store at 4°C for three months and -20°C, stable for up to one year. As with all antibodies care should be taken to avoid repeated freeze thaw cycles. Antibodies should not be exposed to prolonged high temperatures.



Western Blotting

Image 1. Western blot analysis of INA using rabbit polyclonal INA Antibody using 293 cell lysates (2 ug/lane) either nontransfected (Lane 1) or transiently transfected with the INA gene (Lane 2).



Immunohistochemistry

Image 2. Formalin-fixed and paraffin-embedded human brain tissue reacted with INA antibody, which was peroxidase-conjugated to the secondary antibody, followed by DAB staining.