

Datasheet for ABIN5534992
anti-KLF2 antibody (N-Term)



[Go to Product page](#)

2 Images

Overview

Quantity:	400 µL
Target:	KLF2
Binding Specificity:	AA 13-42, N-Term
Reactivity:	Human, Mouse
Host:	Rabbit
Clonality:	Polyclonal
Conjugate:	This KLF2 antibody is un-conjugated
Application:	Western Blotting (WB)

Product Details

Immunogen:	This KLF2 antibody is generated from rabbits immunized with a KLH conjugated synthetic peptide between 13-42 amino acids from the N-terminal region of human KLF2.
Isotype:	Ig Fraction
Purification:	This antibody is purified through a protein A column, followed by peptide affinity purification.

Target Details

Target:	KLF2
Alternative Name:	KLF2 (KLF2 Products)
Background:	KLF2 binds to the CACCC box in the beta-globin gene promoter and activates transcription (By similarity).

Target Details

Molecular Weight: 37 kDa

Gene ID: 10365

UniProt: [Q9Y5W3](#)

Application Details

Application Notes: For WB starting dilution is: 1:1000

Restrictions: For Research Use only

Handling

Format: Liquid

Concentration: 0.4 mg/mL

Buffer: Supplied in PBS with 0.09 % (W/V) sodium azide.

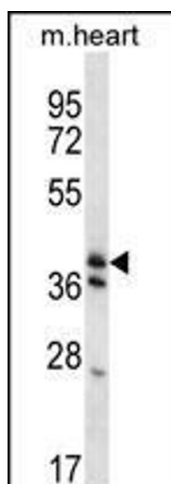
Preservative: Sodium azide

Precaution of Use: This product contains Sodium azide: a POISONOUS AND HAZARDOUS SUBSTANCE which should be handled by trained staff only.

Storage: 4 °C, -20 °C

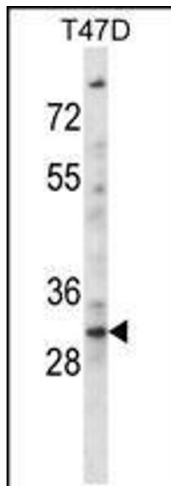
Storage Comment: Store at 4°C for three months and -20°C, stable for up to one year. As with all antibodies care should be taken to avoid repeated freeze thaw cycles. Antibodies should not be exposed to prolonged high temperatures.

Images



Western Blotting

Image 1. Western blot analysis in mouse heart tissue lysates (35ug/lane).



Western Blotting

Image 2. Western blot analysis in T47D cell line lysates (35ug/lane).