

Datasheet for ABIN5535008
anti-SOX11 antibody (N-Term)[Go to Product page](#)

2 Images

Overview

Quantity:	400 µL
Target:	SOX11
Binding Specificity:	AA 103-132, N-Term
Reactivity:	Human, Rat
Host:	Rabbit
Clonality:	Polyclonal
Conjugate:	This SOX11 antibody is un-conjugated
Application:	Western Blotting (WB)

Product Details

Immunogen:	This SOX11 antibody is generated from rabbits immunized with a KLH conjugated synthetic peptide between 103-132 amino acids from the N-terminal region of human SOX11.
Isotype:	Ig Fraction
Purification:	This antibody is purified through a protein A column, followed by peptide affinity purification.

Target Details

Target:	SOX11
Alternative Name:	SOX11 (SOX11 Products)
Background:	This intronless gene encodes a member of the SOX (SRY-related HMG-box) family of transcription factors involved in the regulation of embryonic development and in the determination of the cell fate. The encoded protein may act as a transcriptional regulator after

Target Details

forming a protein complex with other proteins. The protein may function in the developing nervous system and play a role in tumorigenesis.

Molecular Weight: 47 kDa

Gene ID: 6664

UniProt: [P35716](#)

Pathways: [Tube Formation](#)

Application Details

Application Notes: For WB starting dilution is: 1:1000

Restrictions: For Research Use only

Handling

Format: Liquid

Concentration: 0.5 mg/mL

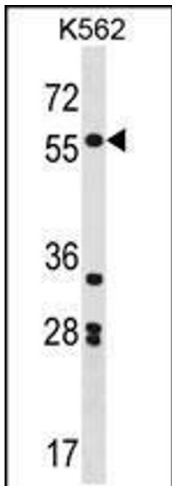
Buffer: Supplied in PBS with 0.09 % (W/V) sodium azide.

Preservative: Sodium azide

Precaution of Use: This product contains Sodium azide: a POISONOUS AND HAZARDOUS SUBSTANCE which should be handled by trained staff only.

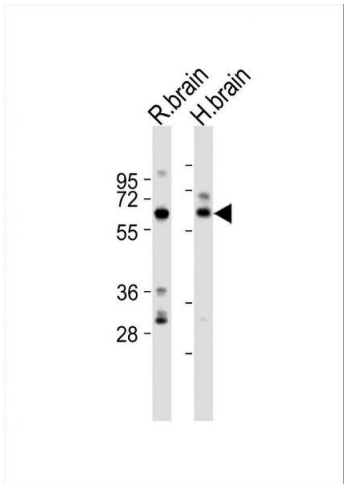
Storage: 4 °C, -20 °C

Storage Comment: Store at 4°C for three months and -20°C, stable for up to one year. As with all antibodies care should be taken to avoid repeated freeze thaw cycles. Antibodies should not be exposed to prolonged high temperatures.



Western Blotting

Image 1. Western blot analysis in K562 cell line lysates (35ug/lane).



Western Blotting

Image 2. Western Blot at 1:2000 dilution Lane 1: rat brain lysates Lane 2: human brain lysates Lysates/proteins at 20 ug per lane.