

Datasheet for ABIN5535014
anti-SLC11A1 antibody (AA 250-276)[Go to Product page](#)

2 Images

Overview

Quantity:	400 µL
Target:	SLC11A1
Binding Specificity:	AA 250-276
Reactivity:	Human
Host:	Rabbit
Clonality:	Polyclonal
Conjugate:	This SLC11A1 antibody is un-conjugated
Application:	Western Blotting (WB), Immunofluorescence (IF)

Product Details

Immunogen:	This SLC11A1 antibody is generated from rabbits immunized with a KLH conjugated synthetic peptide between 250-276 amino acids from the Central region of human SLC11A1.
Isotype:	Ig Fraction
Purification:	This antibody is purified through a protein A column, followed by peptide affinity purification.

Target Details

Target:	SLC11A1
Alternative Name:	SLC11A1 (SLC11A1 Products)
Background:	NRAMP1, also known as SLC11A1, is a member of the solute carrier family 11 (proton-coupled divalent metal ion transporters) family and encodes a multi-pass membrane protein. The protein functions as a divalent transition metal (iron and manganese) transporter involved in

Target Details

iron metabolism and host resistance to certain pathogens. Mutations in this gene have been associated with susceptibility to infectious diseases such as leprosy and tuberculosis, and inflammatory diseases such as Crohn disease and rheumatoid arthritis. Alternatively spliced variants that encode different protein isoforms have been described but the full-length nature of only one has been determined.

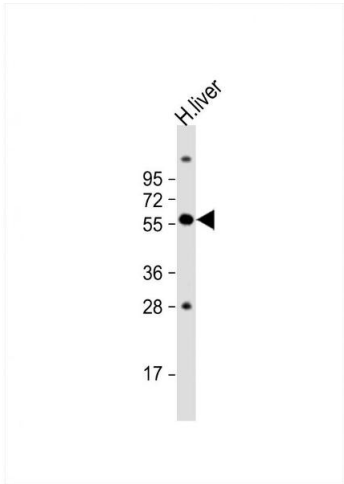
Molecular Weight:	60 kDa
Gene ID:	6556
UniProt:	P49279
Pathways:	Transition Metal Ion Homeostasis , Production of Molecular Mediator of Immune Response , Protein targeting to Nucleus

Application Details

Application Notes:	For WB starting dilution is: 1:1000
Restrictions:	For Research Use only

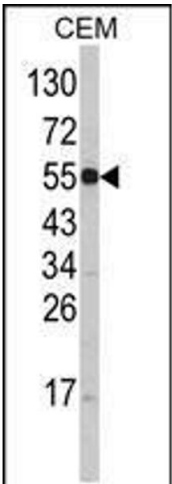
Handling

Format:	Liquid
Concentration:	0.5 mg/mL
Buffer:	Supplied in PBS with 0.09 % (W/V) sodium azide.
Preservative:	Sodium azide
Precaution of Use:	This product contains Sodium azide: a POISONOUS AND HAZARDOUS SUBSTANCE which should be handled by trained staff only.
Storage:	4 °C,-20 °C
Storage Comment:	Store at 4°C for three months and -20°C, stable for up to one year. As with all antibodies care should be taken to avoid repeated freeze thaw cycles. Antibodies should not be exposed to prolonged high temperatures.



Western Blotting

Image 1. Western Blot at 1:1000 dilution + human liver lysate Lysates/proteins at 20 ug per lane.



Western Blotting

Image 2. Western blot analysis of SLC11A1 Antibody in CEM cell line lysates (35ug/lane)