

Datasheet for ABIN5535019

**anti-TAX1BP1 antibody (AA 400-429)**[Go to Product page](#)**1** Image

## Overview

Quantity:	400 µL
Target:	TAX1BP1
Binding Specificity:	AA 400-429
Reactivity:	Human
Host:	Rabbit
Clonality:	Polyclonal
Conjugate:	This TAX1BP1 antibody is un-conjugated
Application:	Western Blotting (WB)

## Product Details

Immunogen:	This TAX1BP1 antibody is generated from rabbits immunized with a KLH conjugated synthetic peptide between 400-429 amino acids from the Central region of human TAX1BP1.
Isotype:	Ig Fraction
Purification:	This antibody is purified through a protein A column, followed by peptide affinity purification.

## Target Details

Target:	TAX1BP1
Alternative Name:	TAX1BP1 ( <a href="#">TAX1BP1 Products</a> )
Background:	The HTLV-1 Tax protein transcriptionally activates the HTLV-1 promoter. Tax also binds to and stimulates the expression of cellular genes, including transcription factors and other proteins (Gachon et al., 1998 [PubMed 9733879]).

### Target Details

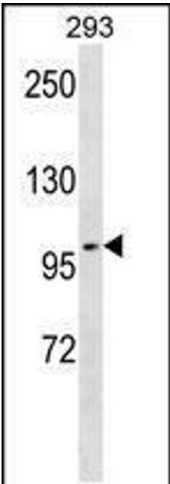
Molecular Weight:	91 kDa
Gene ID:	8887
UniProt:	<a href="#">Q86VP1</a>
Pathways:	<a href="#">TLR Signaling</a>

### Application Details

Application Notes:	For WB starting dilution is: 1:1000
Restrictions:	For Research Use only

### Handling

Format:	Liquid
Concentration:	0.36 mg/mL
Buffer:	Supplied in PBS with 0.09 % (W/V) sodium azide.
Preservative:	Sodium azide
Precaution of Use:	This product contains Sodium azide: a POISONOUS AND HAZARDOUS SUBSTANCE which should be handled by trained staff only.
Storage:	4 °C,-20 °C
Storage Comment:	Store at 4°C for three months and -20°C, stable for up to one year. As with all antibodies care should be taken to avoid repeated freeze thaw cycles. Antibodies should not be exposed to prolonged high temperatures.



Western Blotting

**Image 1.** Western blot analysis in 293 cell line lysates (35ug/lane).