



[Go to Product page](#)

Datasheet for ABIN5535074  
**anti-COL4a2 antibody (N-Term)**

2 Images

Overview

Quantity:	400 µL
Target:	COL4a2 (COL4A2)
Binding Specificity:	AA 156-186, N-Term
Reactivity:	Human
Host:	Rabbit
Clonality:	Polyclonal
Conjugate:	This COL4a2 antibody is un-conjugated
Application:	Western Blotting (WB), Flow Cytometry (FACS)

Product Details

Immunogen:	This COL4A2 antibody is generated from rabbits immunized with a KLH conjugated synthetic peptide between 156-186 amino acids from the N-terminal region of human COL4A2.
Isotype:	Ig Fraction
Purification:	This antibody is purified through a protein A column, followed by peptide affinity purification.

Target Details

Target:	COL4a2 (COL4A2)
Alternative Name:	COL4A2 ( <a href="#">COL4A2 Products</a> )
Background:	This gene encodes one of the six subunits of type IV collagen, the major structural component of basement membranes. The C-terminal portion of the protein, known as canstatin, is an inhibitor of angiogenesis and tumor growth. Like the other members of the type IV collagen

## Target Details

---

gene family, this gene is organized in a head-to-head conformation with another type IV collagen gene so that each gene pair shares a common promoter.

Molecular Weight: 168 kDa

Gene ID: 1284

UniProt: [P08572](#)

## Application Details

---

Application Notes: For WB starting dilution is: 1:1000

For FACS starting dilution is: 1:10~50

Restrictions: For Research Use only

## Handling

---

Format: Liquid

Concentration: 0.5 mg/mL

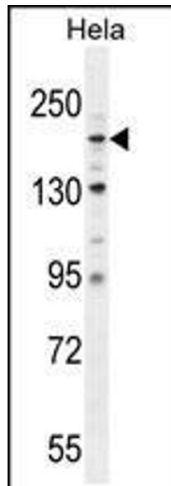
Buffer: Supplied in PBS with 0.09 % (W/V) sodium azide.

Preservative: Sodium azide

Precaution of Use: This product contains Sodium azide: a POISONOUS AND HAZARDOUS SUBSTANCE which should be handled by trained staff only.

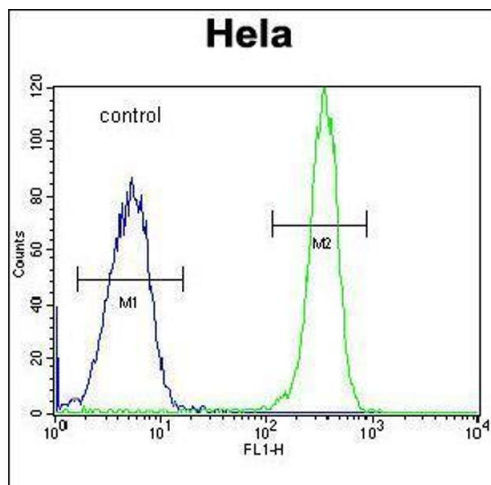
Storage: 4 °C,-20 °C

Storage Comment: Store at 4°C for three months and -20°C, stable for up to one year. As with all antibodies care should be taken to avoid repeated freeze thaw cycles. Antibodies should not be exposed to prolonged high temperatures.



### Western Blotting

**Image 1.** Western blot analysis in HeLa cell line lysates (35ug/lane).



### Flow Cytometry

**Image 2.** Flow cytometric analysis of HeLa cells (right histogram) compared to a negative control cell (left histogram). FITC-conjugated goat-anti-rabbit secondary antibodies were used for the analysis.