

Datasheet for ABIN5535098  
**anti-Keratin 6C antibody (N-Term)**[Go to Product page](#)

## 2 Images

## Overview

Quantity:	400 µL
Target:	Keratin 6C (KRT6C)
Binding Specificity:	AA 135-164, N-Term
Reactivity:	Human
Host:	Rabbit
Clonality:	Polyclonal
Conjugate:	This Keratin 6C antibody is un-conjugated
Application:	Western Blotting (WB), Immunohistochemistry (Paraffin-embedded Sections) (IHC (p))

## Product Details

Immunogen:	This KRT6C antibody is generated from rabbits immunized with a KLH conjugated synthetic peptide between 135-164 amino acids from the N-terminal region of human KRT6C.
Isotype:	Ig Fraction
Purification:	This antibody is purified through a protein A column, followed by peptide affinity purification.

## Target Details

Target:	Keratin 6C (KRT6C)
Alternative Name:	KRT6C ( <a href="#">KRT6C Products</a> )
Background:	Keratins are intermediate filament proteins responsible for the structural integrity of epithelial cells and are subdivided into epithelial keratins and hair keratins. The type II keratins are clustered in a region of chromosome 12q13. [provided by RefSeq].

## Target Details

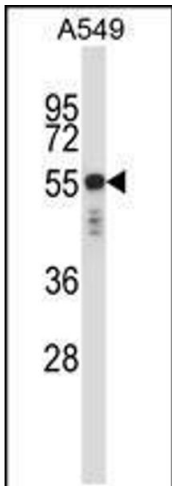
Molecular Weight:	60 kDa
Gene ID:	286887
UniProt:	<a href="#">P48668</a>

## Application Details

Application Notes:	For WB starting dilution is: 1:1000  For IHC-P starting dilution is: 1:10~50
Restrictions:	For Research Use only

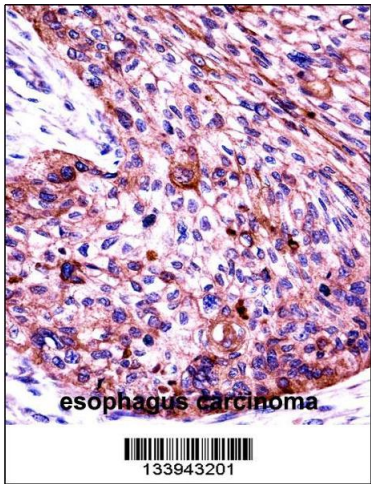
## Handling

Format:	Liquid
Concentration:	0.5 mg/mL
Buffer:	Supplied in PBS with 0.09 % (W/V) sodium azide.
Preservative:	Sodium azide
Precaution of Use:	This product contains Sodium azide: a POISONOUS AND HAZARDOUS SUBSTANCE which should be handled by trained staff only.
Storage:	4 °C,-20 °C
Storage Comment:	Store at 4°C for three months and -20°C, stable for up to one year. As with all antibodies care should be taken to avoid repeated freeze thaw cycles. Antibodies should not be exposed to prolonged high temperatures.



Western Blotting

**Image 1.** Western blot analysis in A549 cell line lysates (35ug/lane).



Immunohistochemistry

**Image 2.** KRT6C Antibody immunohistochemistry analysis in formalin fixed and paraffin embedded human esophagus carcinoma followed by peroxidase conjugation of the secondary antibody and DAB staining.