

Datasheet for ABIN5535101
anti-CTSO antibody (N-Term)[Go to Product page](#)

2 Images

Overview

Quantity:	400 µL
Target:	CTSO
Binding Specificity:	AA 69-98, N-Term
Reactivity:	Human
Host:	Rabbit
Clonality:	Polyclonal
Conjugate:	This CTSO antibody is un-conjugated
Application:	Western Blotting (WB), Immunohistochemistry (Paraffin-embedded Sections) (IHC (p))

Product Details

Immunogen:	This CTSO antibody is generated from rabbits immunized with a KLH conjugated synthetic peptide between 69-98 amino acids from the N-terminal region of human CTSO.
Isotype:	Ig Fraction
Purification:	This antibody is purified through a protein A column, followed by peptide affinity purification.

Target Details

Target:	CTSO
Alternative Name:	CTSO (CTSO Products)
Background:	<p>The protein encoded by the gene is a cysteine proteinase and a member of the papain superfamily. This proteolytic enzyme is involved in cellular protein degradation and turnover.</p> <p>The recombinant form of this enzyme was shown to degrade synthetic peptides typically used</p>

Target Details

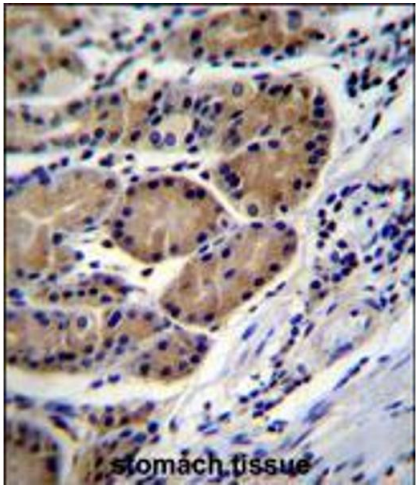
	as substrates for cysteine proteinases and its proteolytic activity was abolished by an inhibitor of cyteine proteinase.
Molecular Weight:	36 kDa
Gene ID:	1519
UniProt:	P43234

Application Details

Application Notes:	For WB starting dilution is: 1:1000 For IHC-P starting dilution is: 1:10~50
Restrictions:	For Research Use only

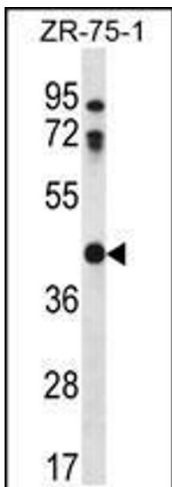
Handling

Format:	Liquid
Concentration:	0.5 mg/mL
Buffer:	Supplied in PBS with 0.09 % (W/V) sodium azide.
Preservative:	Sodium azide
Precaution of Use:	This product contains Sodium azide: a POISONOUS AND HAZARDOUS SUBSTANCE which should be handled by trained staff only.
Storage:	4 °C,-20 °C
Storage Comment:	Store at 4°C for three months and -20°C, stable for up to one year. As with all antibodies care should be taken to avoid repeated freeze thaw cycles. Antibodies should not be exposed to prolonged high temperatures.



Immunohistochemistry

Image 1. CTSO Antibody immunohistochemistry analysis in formalin fixed and paraffin embedded human stomach tissue followed by peroxidase conjugation of the secondary antibody and DAB staining.



Western Blotting

Image 2. Western blot analysis in ZR-75-1 cell line lysates (35ug/lane).