

Datasheet for ABIN5535122  
**anti-DPEP3 antibody (C-Term)**[Go to Product page](#)

## 1 Image

## Overview

Quantity:	400 µL
Target:	DPEP3
Binding Specificity:	AA 391-420, C-Term
Reactivity:	Human, Mouse
Host:	Rabbit
Clonality:	Polyclonal
Conjugate:	This DPEP3 antibody is un-conjugated
Application:	Western Blotting (WB)

## Product Details

Immunogen:	This DPEP3 antibody is generated from rabbits immunized with a KLH conjugated synthetic peptide between 391-420 amino acids from the C-terminal region of human DPEP3.
Isotype:	Ig Fraction
Purification:	This antibody is purified through a protein A column, followed by peptide affinity purification.

## Target Details

Target:	DPEP3
Alternative Name:	DPEP3 ( <a href="#">DPEP3 Products</a> )
Background:	This gene encodes a membrane-bound glycoprotein from the family of dipeptidases involved in hydrolytic metabolism of various dipeptides, including penem and carbapenem beta-lactam antibiotics. This gene is located on chromosome 16 in a cluster with another member of this

## Target Details

family. Alternatively spliced transcript variants that encode different isoforms have been found for this gene.

Molecular Weight: 54 kDa

Gene ID: 64180

UniProt: [Q9H4B8](#)

## Application Details

Application Notes: For WB starting dilution is: 1:1000

Restrictions: For Research Use only

## Handling

Format: Liquid

Concentration: 0.39 mg/mL

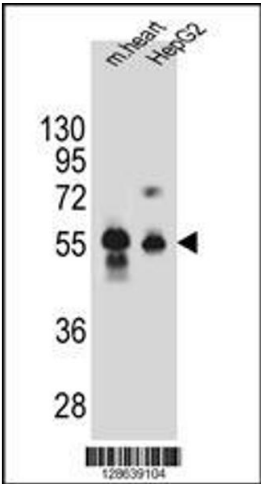
Buffer: Supplied in PBS with 0.09 % (W/V) sodium azide.

Preservative: Sodium azide

Precaution of Use: This product contains Sodium azide: a POISONOUS AND HAZARDOUS SUBSTANCE which should be handled by trained staff only.

Storage: 4 °C, -20 °C

Storage Comment: Store at 4°C for three months and -20°C, stable for up to one year. As with all antibodies care should be taken to avoid repeated freeze thaw cycles. Antibodies should not be exposed to prolonged high temperatures.



Western Blotting

**Image 1.** Western blot analysis in mouse heart tissue and HepG2 cell line lysates (35ug/lane).