

Datasheet for ABIN5535152
anti-DLEC1 antibody (N-Term)



[Go to Product page](#)

1 Image

Overview

Quantity:	400 µL
Target:	DLEC1
Binding Specificity:	AA 263-292, N-Term
Reactivity:	Human
Host:	Rabbit
Clonality:	Polyclonal
Conjugate:	This DLEC1 antibody is un-conjugated
Application:	Western Blotting (WB)

Product Details

Immunogen:	This DLEC1 antibody is generated from rabbits immunized with a KLH conjugated synthetic peptide between 263-292 amino acids from the N-terminal region of human DLEC1.
Isotype:	Ig Fraction
Purification:	This antibody is purified through a protein A column, followed by peptide affinity purification.

Target Details

Target:	DLEC1
Alternative Name:	DLEC1 (DLEC1 Products)
Background:	This gene contains 37 exons, spans approximately 59-kb, and is located in the 3p22-p21.3 chromosomal segment that is commonly deleted in various carcinomas. Several alternatively spliced transcripts have been observed that contain disrupted coding regions and likely encode

Target Details

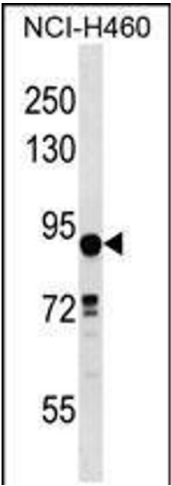
	nonfunctional proteins. Aberrant transcription of this gene may be involved in carcinogenesis of the lung, esophagus, and kidney.
Molecular Weight:	196 kDa
Gene ID:	9940
UniProt:	Q9Y238

Application Details

Application Notes:	For WB starting dilution is: 1:1000
Restrictions:	For Research Use only

Handling

Format:	Liquid
Buffer:	Supplied in PBS with 0.09 % (W/V) sodium azide.
Preservative:	Sodium azide
Precaution of Use:	This product contains Sodium azide: a POISONOUS AND HAZARDOUS SUBSTANCE which should be handled by trained staff only.
Storage:	4 °C,-20 °C
Storage Comment:	Store at 4°C for three months and -20°C, stable for up to one year. As with all antibodies care should be taken to avoid repeated freeze thaw cycles. Antibodies should not be exposed to prolonged high temperatures.



Western Blotting

Image 1. Western blot analysis in NCI-H460 cell line lysates (35ug/lane).