

Datasheet for ABIN5535162  
**anti-EDIL3 antibody (AA 337-365)**



[Go to Product page](#)

3 Images

## Overview

Quantity:	400 µL
Target:	EDIL3 (DEL1)
Binding Specificity:	AA 337-365
Reactivity:	Human
Host:	Rabbit
Clonality:	Polyclonal
Conjugate:	This EDIL3 antibody is un-conjugated
Application:	Western Blotting (WB), Flow Cytometry (FACS), Immunohistochemistry (Paraffin-embedded Sections) (IHC (p))

## Product Details

Immunogen:	This EDIL3 antibody is generated from rabbits immunized with a KLH conjugated synthetic peptide between 337-365 amino acids from the Central region of human EDIL3.
Isotype:	Ig Fraction
Purification:	This antibody is purified through a protein A column, followed by peptide affinity purification.

## Target Details

Target:	EDIL3 (DEL1)
Alternative Name:	EDIL3 ( <a href="#">DEL1 Products</a> )
Background:	EDIL3 is an integrin ligand. It plays an important role in mediating angiogenesis and may be important in vessel wall remodeling and development. It also influences endothelial cell

## Target Details

---

behavior.

Molecular Weight: 54 kDa

Gene ID: 10085

UniProt: [O43854](#)

## Application Details

---

Application Notes: For WB starting dilution is: 1:1000

For IHC-P starting dilution is: 1:50~100

For FACS starting dilution is: 1:10~50

Restrictions: For Research Use only

## Handling

---

Format: Liquid

Concentration: 0.5 mg/mL

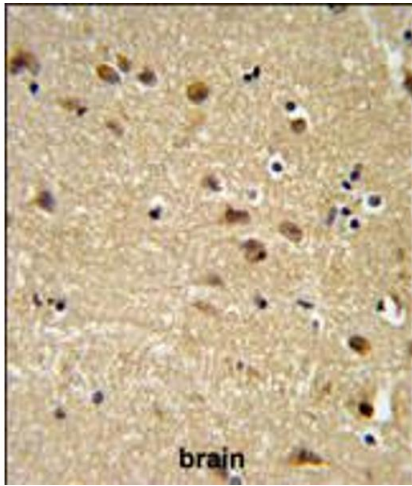
Buffer: Supplied in PBS with 0.09 % (W/V) sodium azide.

Preservative: Sodium azide

Precaution of Use: This product contains Sodium azide: a POISONOUS AND HAZARDOUS SUBSTANCE which should be handled by trained staff only.

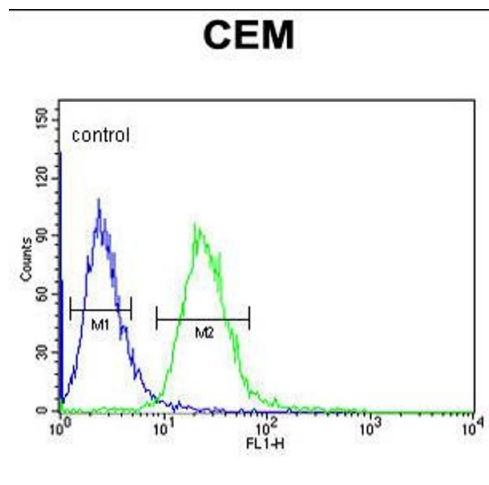
Storage: 4 °C, -20 °C

Storage Comment: Store at 4°C for three months and -20°C, stable for up to one year. As with all antibodies care should be taken to avoid repeated freeze thaw cycles. Antibodies should not be exposed to prolonged high temperatures.



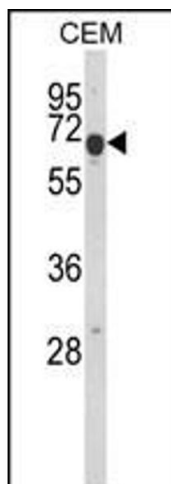
### Immunohistochemistry

**Image 1.** EDIL3 Antibody IHC analysis in formalin fixed and paraffin embedded brain tissue followed by peroxidase conjugation of the secondary antibody and DAB staining.



### Flow Cytometry

**Image 2.** Flow cytometric analysis of CEM cells (right histogram) compared to a negative control cell (left histogram). FITC-conjugated goat-anti-rabbit secondary antibodies were used for the analysis.



### Western Blotting

**Image 3.** Western blot analysis of EDIL3 Antibody in CEM cell line lysates (35ug/lane)