

Datasheet for ABIN5535215
anti-SCYL3 antibody (C-Term)[Go to Product page](#)

2 Images

Overview

Quantity:	400 µL
Target:	SCYL3
Binding Specificity:	AA 671-699, C-Term
Reactivity:	Mouse
Host:	Rabbit
Clonality:	Polyclonal
Conjugate:	This SCYL3 antibody is un-conjugated
Application:	Western Blotting (WB), Immunohistochemistry (Paraffin-embedded Sections) (IHC (p))

Product Details

Immunogen:	This Mouse Scyl3 antibody is generated from rabbits immunized with a KLH conjugated synthetic peptide between 671-699 amino acids from the C-terminal region of mouse Scyl3.
Isotype:	Ig Fraction
Purification:	This antibody is purified through a protein A column, followed by peptide affinity purification.

Target Details

Target:	SCYL3
Alternative Name:	Scyl3 (SCYL3 Products)
Background:	Scyl3 may play a role in regulating cell adhesion/migration complexes in migrating cells.
Molecular Weight:	81 kDa

Target Details

Gene ID: 240880

UniProt: [Q9DBQ7](#)

Application Details

Application Notes: For WB starting dilution is: 1:1000

For IHC-P starting dilution is: 1:10~50

Restrictions: For Research Use only

Handling

Format: Liquid

Concentration: 0.5 mg/mL

Buffer: Supplied in PBS with 0.09 % (W/V) sodium azide.

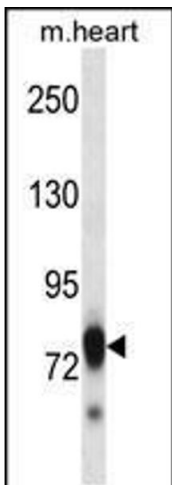
Preservative: Sodium azide

Precaution of Use: This product contains Sodium azide: a POISONOUS AND HAZARDOUS SUBSTANCE which should be handled by trained staff only.

Storage: 4 °C, -20 °C

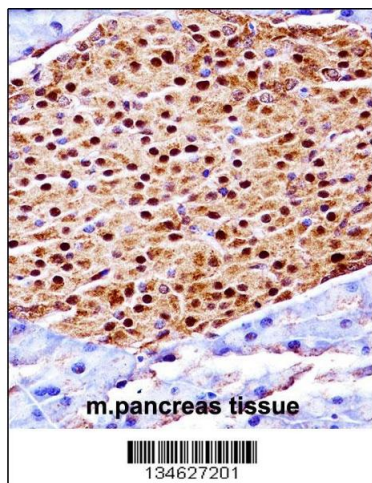
Storage Comment: Store at 4°C for three months and -20°C, stable for up to one year. As with all antibodies care should be taken to avoid repeated freeze thaw cycles. Antibodies should not be exposed to prolonged high temperatures.

Images



Western Blotting

Image 1. Western blot analysis in mouse heart tissue lysates (35ug/lane).



Immunohistochemistry

Image 2. Mouse Scyl3 Antibody immunohistochemistry analysis in formalin fixed and paraffin embedded mouse pancreas tissue followed by peroxidase conjugation of the secondary antibody and DAB staining.