

Datasheet for ABIN5535226  
**anti-CDH10 antibody (C-Term)**

## 3 Images

[Go to Product page](#)

## Overview

Quantity:	400 µL
Target:	CDH10
Binding Specificity:	AA 495-523, C-Term
Reactivity:	Human
Host:	Rabbit
Clonality:	Polyclonal
Conjugate:	This CDH10 antibody is un-conjugated
Application:	Western Blotting (WB), Flow Cytometry (FACS), Immunohistochemistry (Paraffin-embedded Sections) (IHC (p))

## Product Details

Immunogen:	This CDH10 antibody is generated from rabbits immunized with a KLH conjugated synthetic peptide between 495-523 amino acids from the C-terminal region of human CDH10.
Isotype:	Ig Fraction
Purification:	This antibody is purified through a protein A column, followed by peptide affinity purification.

## Target Details

Target:	CDH10
Alternative Name:	CDH10 ( <a href="#">CDH10 Products</a> )
Background:	CDH10 is a type II classical cadherin from the cadherin superfamily, integral membrane proteins that mediate calcium-dependent cell-cell adhesion. Mature cadherin proteins are

## Target Details

composed of a large N-terminal extracellular domain, a single membrane-spanning domain, and a small, highly conserved C-terminal cytoplasmic domain. The extracellular domain consists of 5 subdomains, each containing a cadherin motif, and appears to determine the specificity of the protein's homophilic cell adhesion activity. Type II (atypical) cadherins are defined based on their lack of a HAV cell adhesion recognition sequence specific to type I cadherins. This particular cadherin is predominantly expressed in brain and is putatively involved in synaptic adhesions, axon outgrowth and guidance.

Molecular Weight: 88 kDa

Gene ID: 1008

UniProt: [Q9Y6N8](#)

Pathways: [Cell-Cell Junction Organization](#)

## Application Details

Application Notes: For WB starting dilution is: 1:1000

For IHC-P starting dilution is: 1:10~50

For FACS starting dilution is: 1:10~50

Restrictions: For Research Use only

## Handling

Format: Liquid

Concentration: 0.47 mg/mL

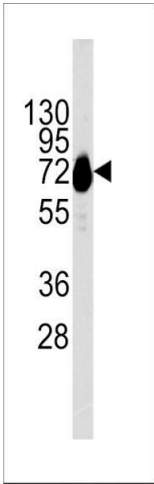
Buffer: Supplied in PBS with 0.09 % (W/V) sodium azide.

Preservative: Sodium azide

Precaution of Use: This product contains Sodium azide: a POISONOUS AND HAZARDOUS SUBSTANCE which should be handled by trained staff only.

Storage: 4 °C, -20 °C

Storage Comment: Store at 4°C for three months and -20°C, stable for up to one year. As with all antibodies care should be taken to avoid repeated freeze thaw cycles. Antibodies should not be exposed to prolonged high temperatures.



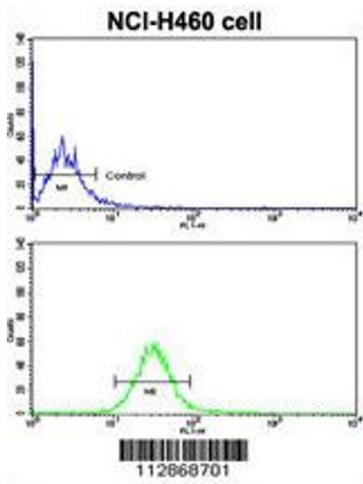
### Western Blotting

**Image 1.** Western blot analysis of CDH10 Antibody in NCI-H460 cell line lysates (35ug/lane)



### Immunohistochemistry

**Image 2.** Formalin-fixed and paraffin-embedded human brain tissue reacted with CDH10 antibody , which was peroxidase-conjugated to the secondary antibody, followed by DAB staining.



### Flow Cytometry

**Image 3.** Flow cytometric analysis of NCI-H460 cells using Cadherin 10 (CDH10) Antibody (bottom histogram) compared to a negative control cell (top histogram). FITC-conjugated goat-anti-rabbit secondary antibodies were used for the analysis.