



[Go to Product page](#)

Datasheet for ABIN5535227  
**anti-CDH10 antibody (N-Term)**

3 Images

Overview

Quantity:	400 µL
Target:	CDH10
Binding Specificity:	AA 25-55, N-Term
Reactivity:	Human
Host:	Rabbit
Clonality:	Polyclonal
Conjugate:	This CDH10 antibody is un-conjugated
Application:	Western Blotting (WB), Flow Cytometry (FACS), Immunohistochemistry (Paraffin-embedded Sections) (IHC (p))

Product Details

Immunogen:	This CDH10 antibody is generated from rabbits immunized with a KLH conjugated synthetic peptide between 25-55 amino acids from the N-terminal region of human CDH10.
Isotype:	Ig Fraction
Purification:	This antibody is purified through a protein A column, followed by peptide affinity purification.

Target Details

Target:	CDH10
Alternative Name:	CDH10 ( <a href="#">CDH10 Products</a> )
Background:	CDH10 is a type II classical cadherin from the cadherin superfamily, integral membrane proteins that mediate calcium-dependent cell-cell adhesion. Mature cadherin proteins are

## Target Details

---

composed of a large N-terminal extracellular domain, a single membrane-spanning domain, and a small, highly conserved C-terminal cytoplasmic domain. The extracellular domain consists of 5 subdomains, each containing a cadherin motif, and appears to determine the specificity of the protein's homophilic cell adhesion activity. Type II (atypical) cadherins are defined based on their lack of a HAV cell adhesion recognition sequence specific to type I cadherins. This particular cadherin is predominantly expressed in brain and is putatively involved in synaptic adhesions, axon outgrowth and guidance.

---

Molecular Weight: 88 kDa

---

Gene ID: 1008

---

UniProt: [Q9Y6N8](#)

---

Pathways: [Cell-Cell Junction Organization](#)

## Application Details

---

Application Notes: For WB starting dilution is: 1:1000

For IHC-P starting dilution is: 1:10~50

For FACS starting dilution is: 1:10~50

---

Restrictions: For Research Use only

## Handling

---

Format: Liquid

---

Concentration: 0.48 mg/mL

---

Buffer: Supplied in PBS with 0.09 % (W/V) sodium azide.

---

Preservative: Sodium azide

---

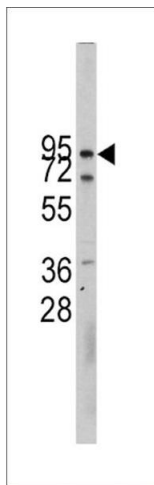
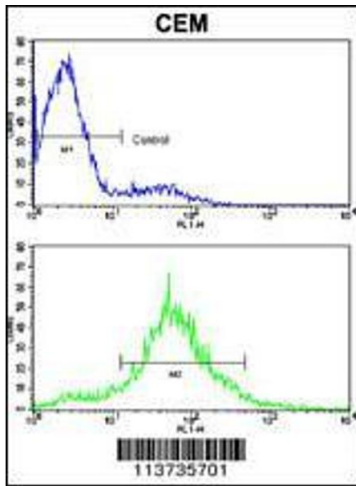
Precaution of Use: This product contains Sodium azide: a POISONOUS AND HAZARDOUS SUBSTANCE which should be handled by trained staff only.

---

Storage: 4 °C, -20 °C

---

Storage Comment: Store at 4°C for three months and -20°C, stable for up to one year. As with all antibodies care should be taken to avoid repeated freeze thaw cycles. Antibodies should not be exposed to prolonged high temperatures.



### Flow Cytometry

**Image 1.** Flow cytometric analysis of CEM cells using Cadherin 10 (CDH10) Antibody (bottom histogram) compared to a negative control cell (top histogram). FITC-conjugated goat-anti-rabbit secondary antibodies were used for the analysis.

### Western Blotting

**Image 2.** Western blot analysis of CDH10 Antibody in CEM cell line lysates (35ug/lane)

### Immunohistochemistry

**Image 3.** Formalin-fixed and paraffin-embedded human brain tissue reacted with CDH10 antibody (N-term), which was peroxidase-conjugated to the secondary antibody, followed by DAB staining.