

Datasheet for ABIN5535309
anti-SEMA3D antibody (C-Term)[Go to Product page](#)

1 Image

Overview

Quantity:	400 µL
Target:	SEMA3D
Binding Specificity:	AA 611-640, C-Term
Reactivity:	Human
Host:	Rabbit
Clonality:	Polyclonal
Conjugate:	This SEMA3D antibody is un-conjugated
Application:	Western Blotting (WB)

Product Details

Immunogen:	This SEMA3D antibody is generated from rabbits immunized with a KLH conjugated synthetic peptide between 611-640 amino acids from the C-terminal region of human SEMA3D.
Isotype:	Ig Fraction
Purification:	This antibody is purified through a protein A column, followed by peptide affinity purification.

Target Details

Target:	SEMA3D
Alternative Name:	SEMA3D (SEMA3D Products)
Background:	Induces the collapse and paralysis of neuronal growth cones. Could potentially act as repulsive cues toward specific neuronal populations. Binds to neuropilin (By similarity).

Target Details

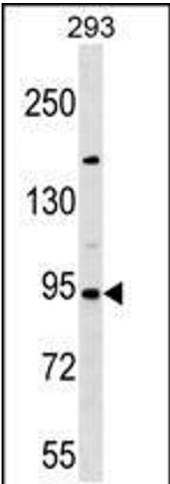
Molecular Weight:	90 kDa
Gene ID:	223117
UniProt:	O95025
Pathways:	Regulation of Cell Size

Application Details

Application Notes:	For WB starting dilution is: 1:1000
Restrictions:	For Research Use only

Handling

Format:	Liquid
Concentration:	0.45 mg/mL
Buffer:	Supplied in PBS with 0.09 % (W/V) sodium azide.
Preservative:	Sodium azide
Precaution of Use:	This product contains Sodium azide: a POISONOUS AND HAZARDOUS SUBSTANCE which should be handled by trained staff only.
Storage:	4 °C,-20 °C
Storage Comment:	Store at 4°C for three months and -20°C, stable for up to one year. As with all antibodies care should be taken to avoid repeated freeze thaw cycles. Antibodies should not be exposed to prolonged high temperatures.



Western Blotting

Image 1. Western blot analysis in 293 cell line lysates (35ug/lane).