

Datasheet for ABIN5535344
anti-CASD1 antibody (N-Term)

3 Images

[Go to Product page](#)

Overview

Quantity:	400 µL
Target:	CASD1
Binding Specificity:	AA 97-126, N-Term
Reactivity:	Human, Mouse
Host:	Rabbit
Clonality:	Polyclonal
Conjugate:	This CASD1 antibody is un-conjugated
Application:	Western Blotting (WB), Flow Cytometry (FACS)

Product Details

Immunogen:	This CASD1 antibody is generated from rabbits immunized with a KLH conjugated synthetic peptide between 97-126 amino acids from the N-terminal region of human CASD1.
Isotype:	Ig Fraction
Purification:	This antibody is purified through a protein A column, followed by peptide affinity purification.

Target Details

Target:	CASD1
Alternative Name:	CASD1 (CASD1 Products)
Molecular Weight:	92 kDa
Gene ID:	64921

Target Details

UniProt: [Q96PB1](#)

Application Details

Application Notes: For WB starting dilution is: 1:1000
For FACS starting dilution is: 1:10~50

Restrictions: For Research Use only

Handling

Format: Liquid

Concentration: 0.45 mg/mL

Buffer: Supplied in PBS with 0.09 % (W/V) sodium azide.

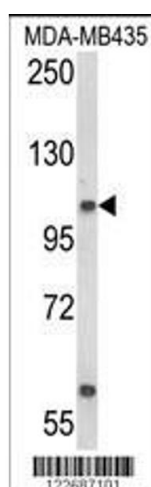
Preservative: Sodium azide

Precaution of Use: This product contains Sodium azide: a POISONOUS AND HAZARDOUS SUBSTANCE which should be handled by trained staff only.

Storage: 4 °C, -20 °C

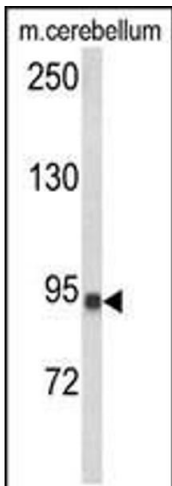
Storage Comment: Store at 4°C for three months and -20°C, stable for up to one year. As with all antibodies care should be taken to avoid repeated freeze thaw cycles. Antibodies should not be exposed to prolonged high temperatures.

Images



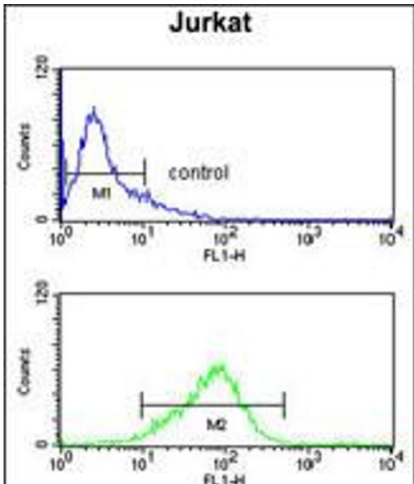
Western Blotting

Image 1. Western blot analysis of CASD1 Antibody in MDA-MB435 cell line lysates (35ug/lane)



Western Blotting

Image 2. Western blot analysis of CASD1 Antibody in mouse cerebellum tissue lysates (35ug/lane)



Flow Cytometry

Image 3. Flow cytometry analysis of Jurkat cells (bottom histogram) compared to a negative control cell (top histogram).FITC-conjugated goat-anti-rabbit secondary antibodies were used for the analysis.