



[Go to Product page](#)

Datasheet for ABIN5535407

anti-Haptoglobin antibody (AA 212-240)

3 Images

Overview

Quantity:	400 µL
Target:	Haptoglobin (HP)
Binding Specificity:	AA 212-240
Reactivity:	Human
Host:	Rabbit
Clonality:	Polyclonal
Conjugate:	This Haptoglobin antibody is un-conjugated
Application:	Western Blotting (WB), Immunohistochemistry (Paraffin-embedded Sections) (IHC (p))

Product Details

Immunogen:	This HPR antibody is generated from rabbits immunized with a KLH conjugated synthetic peptide between 212-240 amino acids from the Central region of human HPR.
Isotype:	Ig Fraction
Purification:	This antibody is purified through a protein A column, followed by peptide affinity purification.

Target Details

Target:	Haptoglobin (HP)
Alternative Name:	HP (HP Products)
Background:	Ubiquitous transcription factor required for a diverse set of processes. It is a component of the CCR4 complex involved in the control of gene expression (By similarity).

Target Details

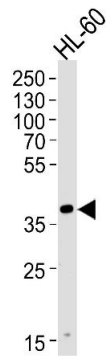
Molecular Weight:	39 kDa
Gene ID:	3250
UniProt:	P00739
Pathways:	Transition Metal Ion Homeostasis

Application Details

Application Notes:	For WB starting dilution is: 1:2000 For IHC-P starting dilution is: 1:50~100
Restrictions:	For Research Use only

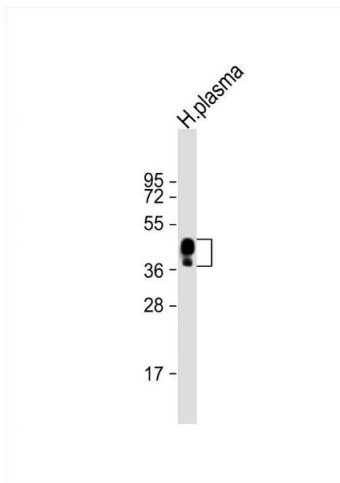
Handling

Format:	Liquid
Concentration:	0.5 mg/mL
Buffer:	Supplied in PBS with 0.09 % (W/V) sodium azide.
Preservative:	Sodium azide
Precaution of Use:	This product contains Sodium azide: a POISONOUS AND HAZARDOUS SUBSTANCE which should be handled by trained staff only.
Storage:	4 °C, -20 °C
Storage Comment:	Store at 4°C for three months and -20°C, stable for up to one year. As with all antibodies care should be taken to avoid repeated freeze thaw cycles. Antibodies should not be exposed to prolonged high temperatures.



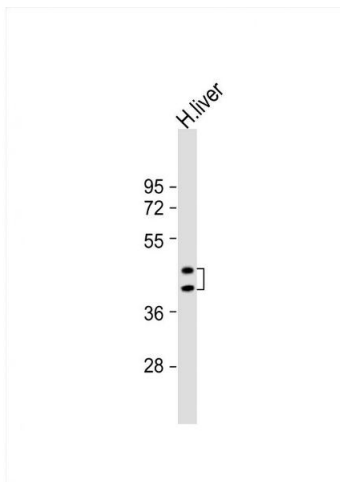
Western Blotting

Image 1. Western blot analysis of lysate from HL-60 cell line, using HPR Antibody at 1:1000 at each lane.



Western Blotting

Image 2. Western Blot at 1:2000 dilution + human plasma lysate Lysates/proteins at 20 ug per lane.



Western Blotting

Image 3. Western Blot at 1:8000 dilution + human liver lysate Lysates/proteins at 20 ug per lane.