

Datasheet for ABIN5535470  
**anti-AMELX antibody (N-Term)**[Go to Product page](#)

## 3 Images

## Overview

Quantity:	400 µL
Target:	AMELX
Binding Specificity:	AA 17-46, N-Term
Reactivity:	Human
Host:	Rabbit
Clonality:	Polyclonal
Conjugate:	This AMELX antibody is un-conjugated
Application:	Western Blotting (WB), Flow Cytometry (FACS), Immunohistochemistry (Paraffin-embedded Sections) (IHC (p))

## Product Details

Immunogen:	This AMELX antibody is generated from rabbits immunized with a KLH conjugated synthetic peptide between 17-46 amino acids from the N-terminal region of human AMELX.
Isotype:	Ig Fraction
Purification:	This antibody is purified through a protein A column, followed by peptide affinity purification.

## Target Details

Target:	AMELX
Alternative Name:	AMELX ( <a href="#">AMELX Products</a> )
Background:	This gene encodes a member of the amelogenin family of extracellular matrix proteins. Amelogenins are involved in biomineralization during tooth enamel development. Mutations in

## Target Details

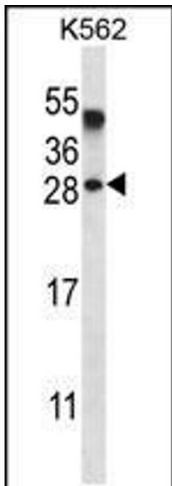
	this gene cause X-linked amelogenesis imperfecta. Alternative splicing results in multiple transcript variants encoding different isoforms.
Molecular Weight:	22 kDa
Gene ID:	265
UniProt:	<a href="#">Q99217</a>

## Application Details

Application Notes:	For WB starting dilution is: 1:1000
	For IHC-P starting dilution is: 1:10~50
	For FACS starting dilution is: 1:10~50
Restrictions:	For Research Use only

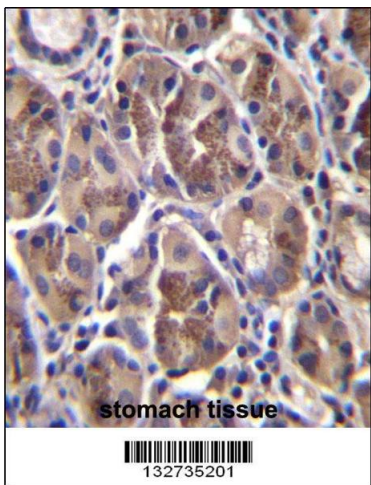
## Handling

Format:	Liquid
Concentration:	0.5 mg/mL
Buffer:	Supplied in PBS with 0.09 % (W/V) sodium azide.
Preservative:	Sodium azide
Precaution of Use:	This product contains Sodium azide: a POISONOUS AND HAZARDOUS SUBSTANCE which should be handled by trained staff only.
Storage:	4 °C, -20 °C
Storage Comment:	Store at 4°C for three months and -20°C, stable for up to one year. As with all antibodies care should be taken to avoid repeated freeze thaw cycles. Antibodies should not be exposed to prolonged high temperatures.



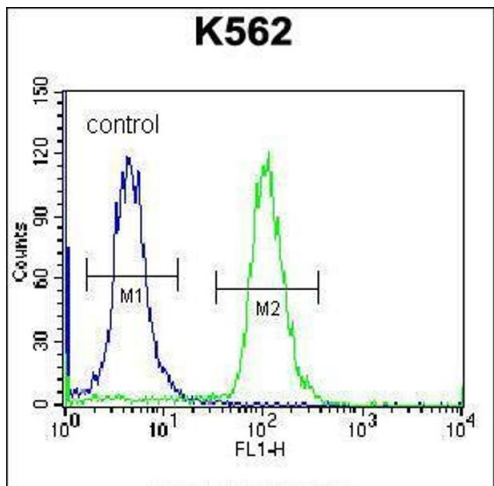
### Western Blotting

**Image 1.** Western blot analysis in K562 cell line lysates (35ug/lane).



### Immunohistochemistry

**Image 2.** AMELX Antibody immunohistochemistry analysis in formalin fixed and paraffin embedded human stomach tissue followed by peroxidase conjugation of the secondary antibody and DAB staining.



### Flow Cytometry

**Image 3.** Flow cytometric analysis of K562 cells (right histogram) compared to a negative control cell (left histogram). FITC-conjugated donkey-anti-rabbit secondary antibodies were used for the analysis.