



[Go to Product page](#)

Datasheet for ABIN5535472  
**anti-POTED antibody (C-Term)**

2 Images

Overview

Quantity:	400 µL
Target:	POTED
Binding Specificity:	AA 542-571, C-Term
Reactivity:	Human
Host:	Rabbit
Clonality:	Polyclonal
Conjugate:	This POTED antibody is un-conjugated
Application:	Western Blotting (WB), Immunohistochemistry (Paraffin-embedded Sections) (IHC (p))

Product Details

Immunogen:	This POTE antibody is generated from rabbits immunized with a KLH conjugated synthetic peptide between 542-571 amino acids from the C-terminal region of human POTE.
Isotype:	Ig Fraction
Purification:	This antibody is purified through a protein A column, followed by peptide affinity purification.

Target Details

Target:	POTED
Alternative Name:	POTE ( <a href="#">POTED Products</a> )
Background:	The POTE protein contains seven ankyrin repeats between amino acids 140 and 380. Expression of POTE in prostate cancer and its undetectable expression in normal essential tissues make POTE a candidate for the immunotherapy of prostate cancer. The existence of a

## Target Details

---

large number of closely related but rapidly diverging members, their location on multiple chromosomes and their limited expression pattern suggest an important role for the POTE gene family in reproductive processes.

Molecular Weight: 66 kDa

Gene ID: 100288966, 317754

UniProt: [Q86YR6](#)

## Application Details

---

Application Notes: For IHC-P starting dilution is: 1:10~50

For WB starting dilution is: 1:1000

Restrictions: For Research Use only

## Handling

---

Format: Liquid

Concentration: 0.5 mg/mL

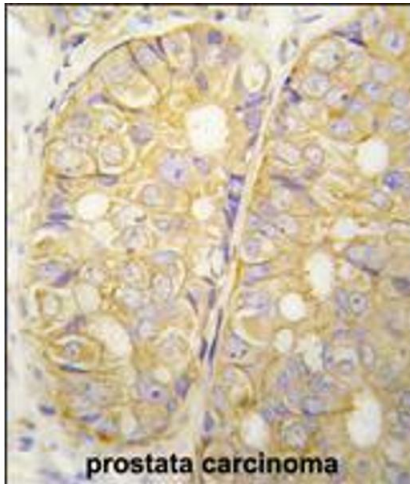
Buffer: Supplied in PBS with 0.09 % (W/V) sodium azide.

Preservative: Sodium azide

Precaution of Use: This product contains Sodium azide: a POISONOUS AND HAZARDOUS SUBSTANCE which should be handled by trained staff only.

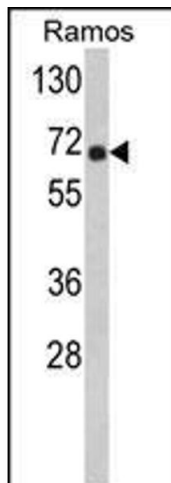
Storage: 4 °C,-20 °C

Storage Comment: Store at 4°C for three months and -20°C, stable for up to one year. As with all antibodies care should be taken to avoid repeated freeze thaw cycles. Antibodies should not be exposed to prolonged high temperatures.



### Immunohistochemistry

**Image 1.** Formalin-fixed and paraffin-embedded human prostate carcinoma tissue reacted with POTE antibody, which was peroxidase-conjugated to the secondary antibody, followed by DAB staining.



### Western Blotting

**Image 2.** Western blot analysis of POTE Antibody in Ramos cell line lysates (35ug/lane)