

Datasheet for ABIN5535477
anti-AP2B1 antibody (AA 517-546)



[Go to Product page](#)

1 Image

Overview

Quantity:	400 µL
Target:	AP2B1
Binding Specificity:	AA 517-546
Reactivity:	Human
Host:	Rabbit
Clonality:	Polyclonal
Conjugate:	This AP2B1 antibody is un-conjugated
Application:	Western Blotting (WB)

Product Details

Immunogen:	This AP2B1 antibody is generated from rabbits immunized with a KLH conjugated synthetic peptide between 517-546 amino acids from the Central region of human AP2B1.
Isotype:	Ig Fraction
Purification:	This antibody is purified through a protein A column, followed by peptide affinity purification.

Target Details

Target:	AP2B1
Alternative Name:	AP2B1 (AP2B1 Products)
Background:	The protein encoded by this gene is one of two large chain components of the assembly protein complex 2, which serves to link clathrin to receptors in coated vesicles. The encoded protein is found on the cytoplasmic face of coated vesicles in the plasma membrane. Two

Target Details

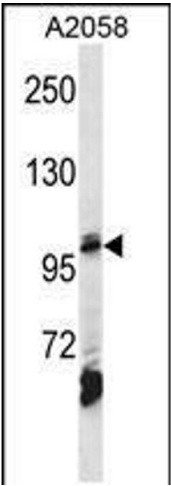
	transcript variants encoding different isoforms have been found for this gene.
Molecular Weight:	105 kDa
Gene ID:	163
UniProt:	P63010
Pathways:	EGFR Signaling Pathway , Neurotrophin Signaling Pathway , EGFR Downregulation

Application Details

Application Notes:	For WB starting dilution is: 1:1000
Restrictions:	For Research Use only

Handling

Format:	Liquid
Concentration:	0.5 mg/mL
Buffer:	Supplied in PBS with 0.09 % (W/V) sodium azide.
Preservative:	Sodium azide
Precaution of Use:	This product contains Sodium azide: a POISONOUS AND HAZARDOUS SUBSTANCE which should be handled by trained staff only.
Storage:	4 °C,-20 °C
Storage Comment:	Store at 4°C for three months and -20°C, stable for up to one year. As with all antibodies care should be taken to avoid repeated freeze thaw cycles. Antibodies should not be exposed to prolonged high temperatures.



Western Blotting

Image 1. Western blot analysis in A2058 cell line lysates (35ug/lane).