



[Go to Product page](#)

Datasheet for ABIN5535528
anti-GOT1 antibody (C-Term)

3 Images

Overview

Quantity:	400 µL
Target:	GOT1
Binding Specificity:	AA 352-381, C-Term
Reactivity:	Human, Mouse
Host:	Rabbit
Clonality:	Polyclonal
Conjugate:	This GOT1 antibody is un-conjugated
Application:	Western Blotting (WB), Immunohistochemistry (Paraffin-embedded Sections) (IHC (p)), Flow Cytometry (FACS)

Product Details

Immunogen:	This GOT1 antibody is generated from rabbits immunized with a KLH conjugated synthetic peptide between 352-381 amino acids from the C-terminal region of human GOT1.
Isotype:	Ig Fraction
Purification:	This antibody is purified through a protein A column, followed by peptide affinity purification.

Target Details

Target:	GOT1
Alternative Name:	GOT1 (GOT1 Products)
Background:	Glutamic-oxaloacetic transaminase is a pyridoxal phosphate-dependent enzyme which exists in cytoplasmic and mitochondrial forms, GOT1 and GOT2, respectively. GOT plays a role in amino

Target Details

acid metabolism and the urea and tricarboxylic acid cycles. The two enzymes are homodimeric and show close homology.

Molecular Weight: 46 kDa

Gene ID: 2805

UniProt: [P17174](#)

Pathways: [Hepatitis C](#), [Monocarboxylic Acid Catabolic Process](#), [Methionine Biosynthetic Process](#)

Application Details

Application Notes: For WB starting dilution is: 1:1000

For IHC-P starting dilution is: 1:10~50

For FACS starting dilution is: 1:10~50

Restrictions: For Research Use only

Handling

Format: Liquid

Concentration: 0.5 mg/mL

Buffer: Supplied in PBS with 0.09 % (W/V) sodium azide.

Preservative: Sodium azide

Precaution of Use: This product contains Sodium azide: a POISONOUS AND HAZARDOUS SUBSTANCE which should be handled by trained staff only.

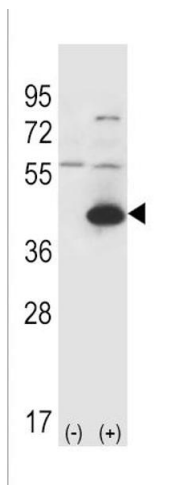
Storage: 4 °C,-20 °C

Storage Comment: Store at 4°C for three months and -20°C, stable for up to one year. As with all antibodies care should be taken to avoid repeated freeze thaw cycles. Antibodies should not be exposed to prolonged high temperatures.



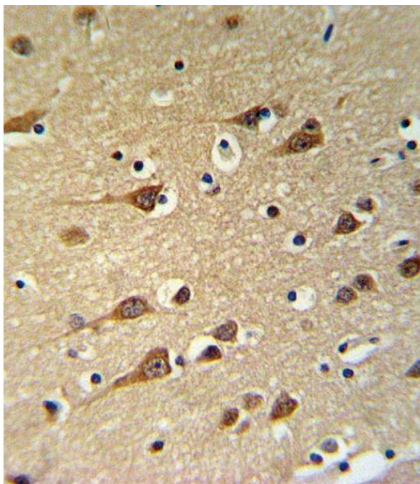
Western Blotting

Image 1. Western blot analysis of GOT1 Antibody in mouse liver tissue lysates (35ug/lane)



Western Blotting

Image 2. Western blot analysis of GOT1 using rabbit polyclonal GOT1 Antibody using 293 cell lysates (2 ug/lane) either nontransfected (Lane 1) or transiently transfected (Lane 2) with the GOT1 gene.



Immunohistochemistry

Image 3. GOT1 Antibody IHC analysis in formalin fixed and paraffin embedded brain tissue followed by peroxidase conjugation of the secondary antibody and DAB staining.