

Datasheet for ABIN5535545
anti-BOLL antibody (N-Term)



[Go to Product page](#)

1 Image

Overview

Quantity:	400 µL
Target:	BOLL
Binding Specificity:	AA 23-51, N-Term
Reactivity:	Human
Host:	Rabbit
Clonality:	Polyclonal
Conjugate:	This BOLL antibody is un-conjugated
Application:	Western Blotting (WB)

Product Details

Immunogen:	This BOLL antibody is generated from rabbits immunized with a KLH conjugated synthetic peptide between 23-51 amino acids from the N-terminal region of human BOLL.
Isotype:	Ig Fraction
Purification:	This antibody is purified through a protein A column, followed by peptide affinity purification.

Target Details

Target:	BOLL
Alternative Name:	BOLL (BOLL Products)
Background:	BOLL belongs to the DAZ gene family required for germ cell development. It encodes an RNA-binding protein which is more similar to Drosophila Boule than to human proteins encoded by genes DAZ (deleted in azoospermia) or DAZL (deleted in azoospermia-like). Loss of this gene

Target Details

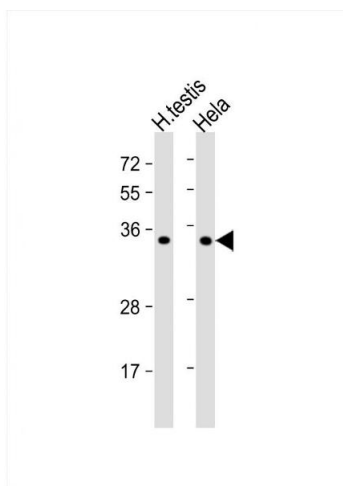
	function results in the absence of sperm in semen (azoospermia). Histological studies demonstrated that the primary defect is at the meiotic G2/M transition.
Molecular Weight:	31 kDa
Gene ID:	66037
UniProt:	Q8N9W6

Application Details

Application Notes:	For WB starting dilution is: 1:1000
Restrictions:	For Research Use only

Handling

Format:	Liquid
Concentration:	0.5 mg/mL
Buffer:	Supplied in PBS with 0.09 % (W/V) sodium azide.
Preservative:	Sodium azide
Precaution of Use:	This product contains Sodium azide: a POISONOUS AND HAZARDOUS SUBSTANCE which should be handled by trained staff only.
Storage:	4 °C,-20 °C
Storage Comment:	Store at 4°C for three months and -20°C, stable for up to one year. As with all antibodies care should be taken to avoid repeated freeze thaw cycles. Antibodies should not be exposed to prolonged high temperatures.



Western Blotting

Image 1. Western Blot at 1:1000 dilution Lane 1: human testis lysate Lane 2: HeLa whole cell lysate Lysates/proteins at 20 ug per lane.