

Datasheet for ABIN5535597
anti-CAN antibody (N-Term)

2 Images

[Go to Product page](#)

Overview

Quantity:	400 µL
Target:	CAN
Binding Specificity:	AA 21-51, N-Term
Reactivity:	Human, Mouse
Host:	Rabbit
Clonality:	Polyclonal
Conjugate:	This CAN antibody is un-conjugated
Application:	Western Blotting (WB), Immunohistochemistry (Paraffin-embedded Sections) (IHC (p))

Product Details

Immunogen:	This Calcineurin (PPP3CA) antibody is generated from rabbits immunized with a KLH conjugated synthetic peptide between 21-51 amino acids from the N-terminal region of human Calcineurin (PPP3CA).
Isotype:	Ig Fraction
Purification:	This antibody is prepared by Saturated Ammonium Sulfate (SAS) precipitation followed by dialysis

Target Details

Target:	CAN
Alternative Name:	Calcineurin (CAN Products)
Background:	PPP3CA is a calcium-dependent, calmodulin-stimulated protein phosphatase. This subunit may

Target Details

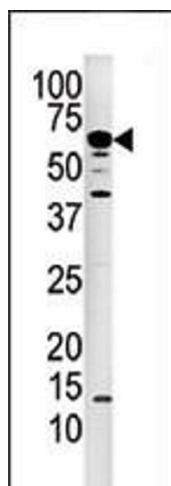
	have a role in the calmodulin activation of calcineurin. PPP3CA dephosphorylates HSPB1 and SSH1.
Molecular Weight:	59 kDa
Gene ID:	5530
UniProt:	Q08209

Application Details

Application Notes:	For WB starting dilution is: 1:1000 For IHC-P starting dilution is: 1:50~100
Restrictions:	For Research Use only

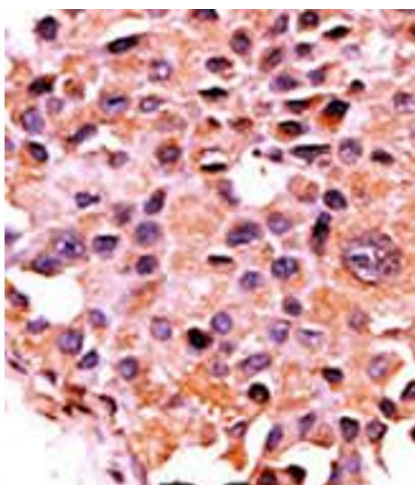
Handling

Format:	Liquid
Concentration:	2 mg/mL
Buffer:	Supplied in PBS with 0.09 % (W/V) sodium azide.
Preservative:	Sodium azide
Precaution of Use:	This product contains Sodium azide: a POISONOUS AND HAZARDOUS SUBSTANCE which should be handled by trained staff only.
Storage:	4 °C,-20 °C
Storage Comment:	Store at 4°C for three months and -20°C, stable for up to one year. As with all antibodies care should be taken to avoid repeated freeze thaw cycles. Antibodies should not be exposed to prolonged high temperatures.



Western Blotting

Image 1. Western blot analysis of anti-PPP3CA Pab in mouse kidney tissue lysate.



Immunohistochemistry

Image 2. Formalin-fixed and paraffin-embedded human cancer tissue reacted with the primary antibody, which was peroxidase-conjugated to the secondary antibody, followed by AEC staining. BC = breast carcinoma; HC = hepatocarcinoma.