

Datasheet for ABIN5535651

anti-Cyclin-Dependent Kinase 15 (ALS2CR7) (AA 96-124), (N-Term) antibody[Go to Product page](#)**2** Images

Overview

Quantity:	400 µL
Target:	Cyclin-Dependent Kinase 15 (ALS2CR7)
Binding Specificity:	AA 96-124, N-Term
Reactivity:	Human, Mouse
Host:	Rabbit
Clonality:	Polyclonal
Conjugate:	Un-conjugated
Application:	Western Blotting (WB)

Product Details

Immunogen:	This Mouse Cdk15 antibody is generated from rabbits immunized with a KLH conjugated synthetic peptide between 96-124 amino acids from the N-terminal region of mouse Cdk15.
Isotype:	Ig Fraction
Purification:	This antibody is purified through a protein A column, followed by peptide affinity purification.

Target Details

Target:	Cyclin-Dependent Kinase 15 (ALS2CR7)
Alternative Name:	Cdk15 (ALS2CR7 Products)
Background:	Serine/threonine-protein kinase involved in the control of the eukaryotic cell cycle, whose activity is controlled by an associated cyclin (By similarity).

Target Details

Molecular Weight:	48 kDa
Gene ID:	271697
UniProt:	Q3V3A1

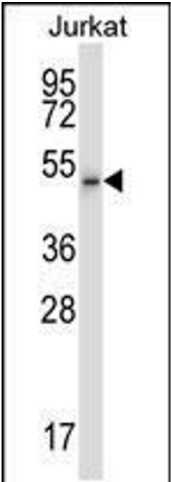
Application Details

Application Notes:	For WB starting dilution is: 1:1000
Restrictions:	For Research Use only

Handling

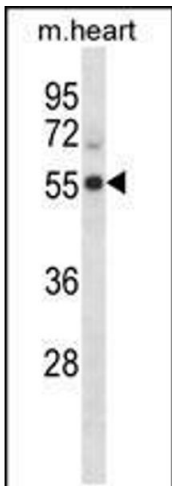
Format:	Liquid
Concentration:	0.5 mg/mL
Buffer:	Supplied in PBS with 0.09 % (W/V) sodium azide.
Preservative:	Sodium azide
Precaution of Use:	This product contains Sodium azide: a POISONOUS AND HAZARDOUS SUBSTANCE which should be handled by trained staff only.
Storage:	4 °C,-20 °C
Storage Comment:	Store at 4°C for three months and -20°C, stable for up to one year. As with all antibodies care should be taken to avoid repeated freeze thaw cycles. Antibodies should not be exposed to prolonged high temperatures.

Images



Western Blotting

Image 1. Western blot analysis in Jurkat cell line lysates (35ug/lane).



Western Blotting

Image 2. Western blot analysis in mouse heart tissue lysates (35ug/lane).