

Datasheet for ABIN5535729
anti-SLC25A31 antibody (AA 139-167)

3 Images

[Go to Product page](#)

Overview

Quantity:	400 µL
Target:	SLC25A31
Binding Specificity:	AA 139-167
Reactivity:	Human
Host:	Rabbit
Clonality:	Polyclonal
Conjugate:	This SLC25A31 antibody is un-conjugated
Application:	Western Blotting (WB), Immunofluorescence (IF), Immunohistochemistry (Paraffin-embedded Sections) (IHC (p))

Product Details

Immunogen:	This SLC25A31 antibody is generated from rabbits immunized with a KLH conjugated synthetic peptide between 139-167 amino acids from the Central region of human SLC25A31.
Isotype:	Ig Fraction
Purification:	This antibody is purified through a protein A column, followed by peptide affinity purification.

Target Details

Target:	SLC25A31
Alternative Name:	SLC25A31 (SLC25A31 Products)
Background:	Mitochondrial ADP/ATP carriers, such as SLC25A31, are nuclear-coded mitochondrial proteins that catalyze the exchange of ATP generated in mitochondria by ATP synthase (see MIM

Target Details

108729) against ADP produced in cytosol by most energy-consuming reactions (Dolce et al., 2005 [PubMed 15670820]).

Molecular Weight: 35 kDa

Gene ID: 83447

UniProt: [Q9H0C2](#)

Application Details

Application Notes: For WB starting dilution is: 1:1000

For IHC-P starting dilution is: 1:10~50

For IF starting dilution is: 1:10~50

Restrictions: For Research Use only

Handling

Format: Liquid

Concentration: 0.28 mg/mL

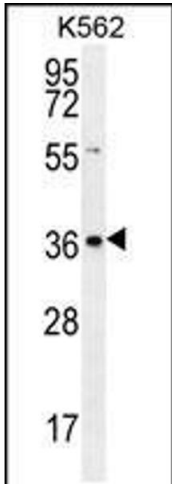
Buffer: Supplied in PBS with 0.09 % (W/V) sodium azide.

Preservative: Sodium azide

Precaution of Use: This product contains Sodium azide: a POISONOUS AND HAZARDOUS SUBSTANCE which should be handled by trained staff only.

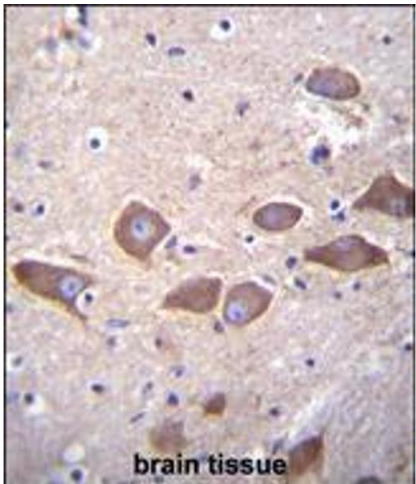
Storage: 4 °C, -20 °C

Storage Comment: Store at 4°C for three months and -20°C, stable for up to one year. As with all antibodies care should be taken to avoid repeated freeze thaw cycles. Antibodies should not be exposed to prolonged high temperatures.



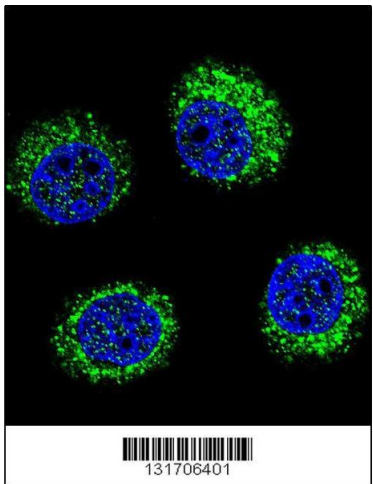
Western Blotting

Image 1. Western blot analysis in K562 cell line lysates (35ug/lane).



Immunohistochemistry

Image 2. SLC25A31 Antibody immunohistochemistry analysis in formalin fixed and paraffin embedded human brain tissue followed by peroxidase conjugation of the secondary antibody and DAB staining.



Immunofluorescence

Image 3. Confocal immunofluorescent analysis of SLC25A31 Antibody with U-251MG cell followed by Alexa Fluor 488-conjugated goat anti-rabbit IgG (green). DAPI was used to stain the cell nuclear (blue).