

Datasheet for ABIN5535730
anti-TTL antibody (C-Term)



[Go to Product page](#)

1 Image

Overview

Quantity:	400 µL
Target:	TTL
Binding Specificity:	AA 232-263, C-Term
Reactivity:	Human
Host:	Rabbit
Clonality:	Polyclonal
Conjugate:	This TTL antibody is un-conjugated
Application:	Western Blotting (WB)

Product Details

Immunogen:	This TTL antibody is generated from rabbits immunized with a KLH conjugated synthetic peptide between 232-263 amino acids from the C-terminal region of human TTL.
Isotype:	Ig Fraction
Purification:	This antibody is purified through a protein A column, followed by peptide affinity purification.

Target Details

Target:	TTL
Alternative Name:	TTL (TTL Products)
Background:	TTL is a cytosolic enzyme involved in the posttranslational modification of alpha-tubulin (see MIM 602529). Alpha-tubulin within assembled microtubules is detyrosinated over time at the C terminus. After microtubule disassembly, TTL restores the tyrosine residues and consequently

Target Details

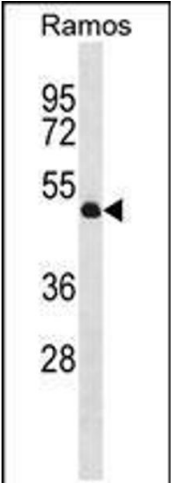
	participates in a cycle of tubulin detyrosination and tyrosination (Erck et al., 2003 [PubMed 14571137]).
Molecular Weight:	43 kDa
Gene ID:	150465
UniProt:	Q8NG68
Pathways:	Regulation of Cell Size

Application Details

Application Notes:	For WB starting dilution is: 1:1000
Restrictions:	For Research Use only

Handling

Format:	Liquid
Concentration:	0.33 mg/mL
Buffer:	Supplied in PBS with 0.09 % (W/V) sodium azide.
Preservative:	Sodium azide
Precaution of Use:	This product contains Sodium azide: a POISONOUS AND HAZARDOUS SUBSTANCE which should be handled by trained staff only.
Storage:	4 °C,-20 °C
Storage Comment:	Store at 4°C for three months and -20°C, stable for up to one year. As with all antibodies care should be taken to avoid repeated freeze thaw cycles. Antibodies should not be exposed to prolonged high temperatures.



Western Blotting

Image 1. Western blot analysis in Ramos cell line lysates (35ug/lane).