

Datasheet for ABIN5535756
anti-EDEM3 antibody (C-Term)



[Go to Product page](#)

1 Image

Overview

Quantity:	400 µL
Target:	EDEM3
Binding Specificity:	AA 774-802, C-Term
Reactivity:	Human
Host:	Rabbit
Clonality:	Polyclonal
Conjugate:	This EDEM3 antibody is un-conjugated
Application:	Western Blotting (WB)

Product Details

Immunogen:	This EDEM3 antibody is generated from rabbits immunized with a KLH conjugated synthetic peptide between 774-802 amino acids from the C-terminal region of human EDEM3.
Isotype:	Ig Fraction
Purification:	This antibody is purified through a protein A column, followed by peptide affinity purification.

Target Details

Target:	EDEM3
Alternative Name:	EDEM3 (EDEM3 Products)
Background:	Quality control in the endoplasmic reticulum (ER) ensures that only properly folded proteins are retained in the cell through recognition and degradation of misfolded or unassembled proteins. EDEM3 belongs to a group of proteins that accelerate degradation of misfolded glycoproteins

Target Details

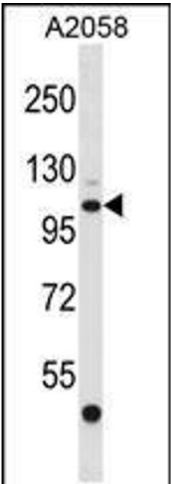
	in the ER (Hirao et al., 2006 [PubMed 16431915]).
Molecular Weight:	105 kDa
Gene ID:	80267
UniProt:	Q9BZQ6
Pathways:	SARS-CoV-2 Protein Interactome

Application Details

Application Notes:	For WB starting dilution is: 1:1000
Restrictions:	For Research Use only

Handling

Format:	Liquid
Concentration:	0.43 mg/mL
Buffer:	Supplied in PBS with 0.09 % (W/V) sodium azide.
Preservative:	Sodium azide
Precaution of Use:	This product contains Sodium azide: a POISONOUS AND HAZARDOUS SUBSTANCE which should be handled by trained staff only.
Storage:	4 °C,-20 °C
Storage Comment:	Store at 4°C for three months and -20°C, stable for up to one year. As with all antibodies care should be taken to avoid repeated freeze thaw cycles. Antibodies should not be exposed to prolonged high temperatures.



Western Blotting

Image 1. Western blot analysis in A2058 cell line lysates (35ug/lane).